



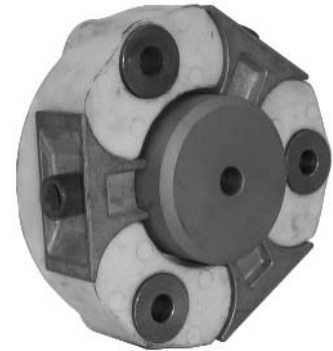
CENTAFLEX 'H' COUPLING

CENTAFLEX 'H'

The 'H' series coupling is a torsionally stiff design that is the perfect solution to problems associated with Diesel-Hydraulic couplings. The hub and flange is the same as the 'A' series Centaflex coupling.

Part No.	Max Bore		Power at 100 RPM kW	Nominal Torque (Nm)	Normal Maximum Speed (RPM)
	Hub	Flange			
CFH008	38.0	55.0	1.047	100.0	6500
CFH016	48.0	70.0	2.094	200.0	5500
CFH025	55.0	83.0	3.665	350.0	5000
CFH030	65.0	110.0	5.236	500.0	4000
CFH050	65.0	100.0	8.377	800.0	4000
CFH090	65.0	100.0	9.948	950.0	4000
CFH110	63.0	-	12.565	1200.0	4000
CFH140	85.0	110.0	16.754	1600.0	3600

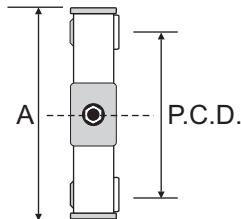
PERFORMANCE DATA



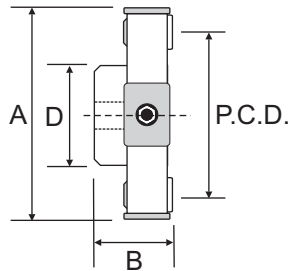
- High speed
- Extremely high thermal stability -50 to +150C
- Oil resistant

DIMENSIONAL DATA

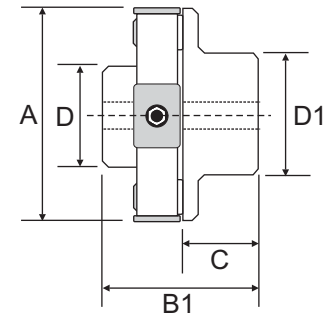
TYPE 0



TYPE 1



TYPE 2



Part No.	Bore			A	B	B1	C	D	D1	PCD	No. Bolts
	Min Hub	Max Hub	Max Flange								
CFH008	12.0	38.0	55.0	125.0	48.0	90.0	42.0	60.0	80.0	100.0	3
CFH016	15.0	48.0	70.0	155.0	58.0	108.0	50.0	70.0	100.0	125.0	3
CFH025	15.0	55.0	85.0	182.0	62.0	117.0	55.0	85.0	115.0	140.0	3
CFH030	20.0	65.0	100.0	205.0	76.0	142.0	66.0	100.0	140.0	165.0	3
CFH050	20.0	65.0	100.0	205.0	76.0	142.0	66.0	100.0	140.0	165.0	4
CFH090	20.0	65.0	100.0	215.0	76.0	142.0	66.0	100.0	140.0	165.0	4
CFH110	20.0	63.0	-	230.0	76.0	-	66.0	100.0	-	180.0	4
CFH140	30.0	85.0	110.0	270.0	88.0	168.0	80.0	125.0	160.0	215.0	4