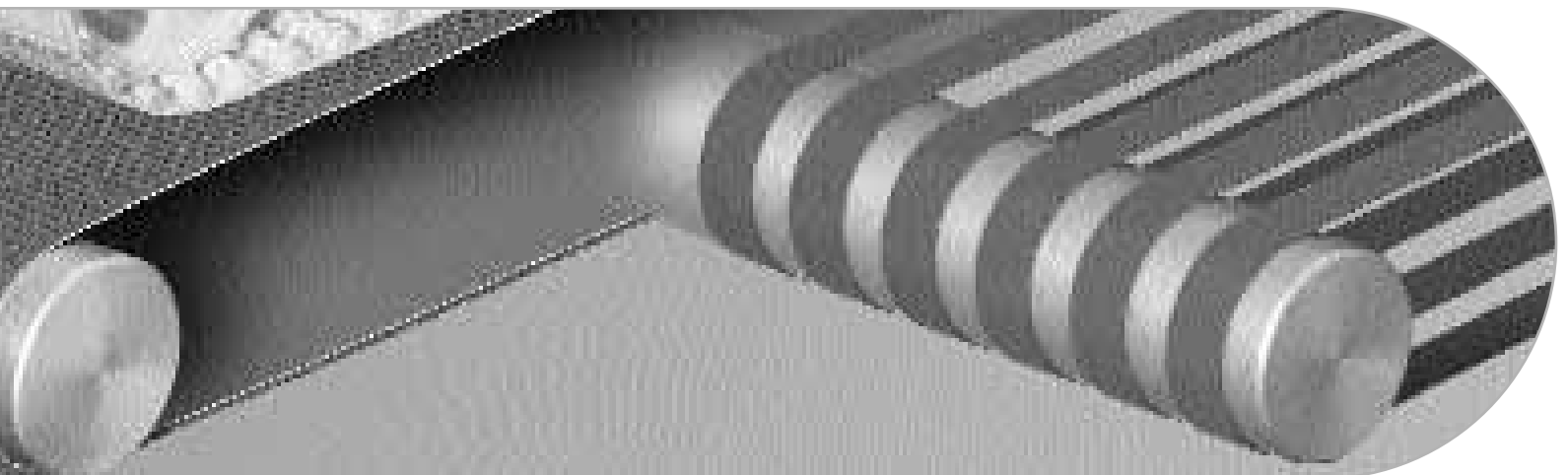




Habasit product range

Habasit-Solutions in motion



OVERVIEW

EXPERIENCE

Habasit was founded in 1946 and has accumulated more than 50 years of belting experience backed by our own state-of-the-art engineered processing machinery. Production at Habasit is maintained by well trained and committed teams. Our activities are supported by in-house Research & Development teams who aim at excellence in application and customer-oriented solutions. We have extensive experience in most industries including: food – material handling – printing & paper – textile – wood – aluminum – glass – metal working – canning – bottling – automotive – electronics and business machines.

PRODUCT SUPPORT

Habasit will provide you with the optimal solutions because we have the broadest range of belting products in the industry and are the only company that designs and manufactures fabric and plastic modular belts. We are your one partner for all your belting needs, such as: HabasitLINK® plastic modular belts, European conveyor belts, machine tapes, folder/gluer belts and spindle tapes, Domestic solid woven, nonwoven, interwoven and specialty conveyor belts, Power Transmission belts, Endless woven belts, Round belts, Timing belts, and Tools.

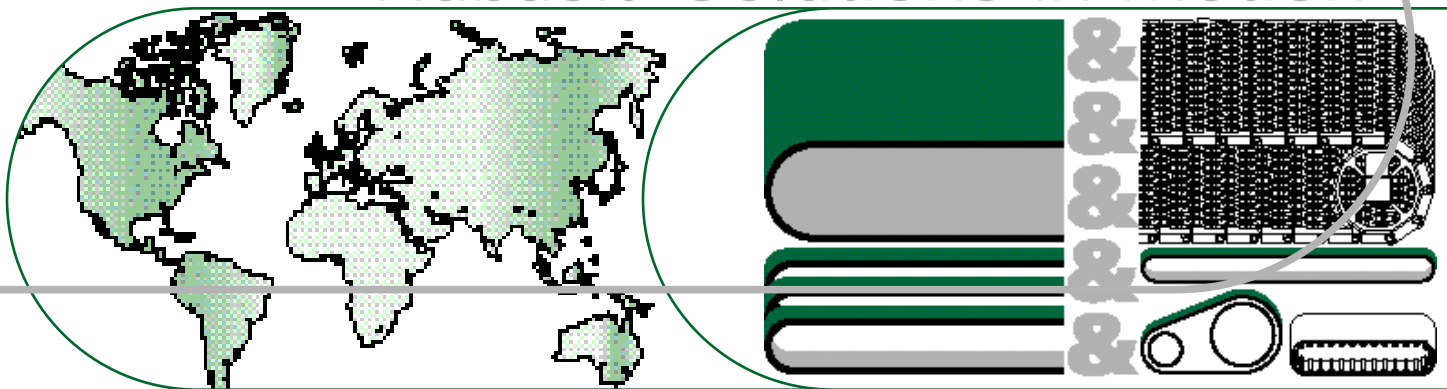
FABRICATION SUPPORT

ISO 9001:2000, 160,000 Square foot, State-of-the-Art Fabrication facility, Training Center and Headquarters, Large inventory for fast delivery.

Capabilities:

- 3 Meter slitting capacity
- Flexproof and Thermofix splicing
- Longitudinal splicing
- Cleat application (RF)
- Sidewall application
- V-Guide application
- Edge sealing for Food belting
- Fully automatic perforation
- Fully automatic Hamid cut to length and quickmelt splicing
- Plastic Modular Belting assembly
- Power turn capability (CAD/CAM cutting machine)
- On-site installations

Habasit-Solutions in motion



APPLICATION SUPPORT

- District Managers
- Customer Care
- Engineering/Technical
- Market Specialists
- Product Specialists (HabasitLINK)
- Large network of authorized service partners

CUSTOMER CARE SUPPORT

Contact us to start using Habasit iStatus, a convenient tool to check the status of your order 24/7 online.

If you want to stay current with your orders, automatically, sign up for order and shipping confirmation by e-mail.



TABLE OF CONTENTS

MATERIAL HANDLING	A	4-7
FOOD	B	8-11
SPECIALTY CONVEYING	C	12-13
PAPER & PRINTING	D	14-15
WOOD	E	16-17
AUTOMOTIVE & METAL	F	18-19
TEXTILE	G	20-21
POWER TRANSMISSION	H	22-23
GLASS, ALUMINUM & AIRSLIDE	I	24-25
HabasitLINK® MODULAR BELTS	J	26-27

Product group	Belt type	PLY	For slider bed	For carrying roller	Permanently antistatic	For Power turns, troughing	Flame retardant	Tension member, material	Conveying side, material	Conveying side, surface	Conveying side, color	Back side, material	Low noise, back side	Back side, surface
Standard	SAB-5E	2	■	■	■	-	-	PES	PVC adh.	blank	drk grey	PES	■	fabric
	SAB-8E	2	■	■	■	-	-	PES	PVC adh.	blank	drk grey	PES	■	fabric
	SAB-12E	2	■	■	■	-	-	PES	PVC adh.	blank	drk grey	PES	-	fabric
	SAB-18E	2	-	■	■	-	-	PES	PVC adh.	blank	drk grey	PVC	-	waffle
	SAG-8E	2	■	■	■	-	-	PES	PVC s-adh.	mini roughtop	drk grey	PES	■	fabric
	SAG-12E	2	■	■	■	-	-	PES	EPDM s-adh.	roughtop	drk grey	PES	-	fabric
	SAQ-8E	2	■	■	■	-	-	PES	PVC adh.	quadrille	drk grey	PES	■	fabric
	SAW-5E	2	■	■	■	-	-	PES	PVC s-adh.	waffle	drk grey	PES	-	fabric
	SNB-5E	2	■	■	■	-	-	PES	PVC	blank	drk grey	PES	■	fabric
	SNB-8E	2	■	■	■	-	-	PES	PVC	blank	drk grey	PES	■	fabric
	SNB-12E	2	■	■	■	-	-	PES	PVC	blank	drk grey	PES	-	fabric
	SNB-18E	3	■	■	■	-	-	PES	PVC	blank	drk grey	PES	-	fabric
	N-Line	NAB-5EKBV	1	■	■	■	-	-	PES	PVC adh.	blank	black	PES	-
NAB-8EXDV		2	■	■	-	-	-	PES	PVC adh.	blank	drkgrn	PES	-	fabric
NAB-10ELBV		2	■	■	■	-	-	PES	PVC adh.	blank	black	PES	■	fabric
NAB-10ELDV		2	■	■	■	-	-	PES	PVC adh.	blank	drk grn	PES	■	fabric
NAB-12EXDV		2	■	■	-	-	-	PES	PVC adh.	blank	drk grn	PES	-	fabric
NAB-15EVDV		3	-	■	-	-	-	PES	PVC adh.	blank	drk grn	PVC	-	waffle
NAB-18EEAV		3	■	■	■	-	-	PES	PVC adh.	blank	drk grey	PES	-	fabric
NAD-10ESBV		2	■	■	■	-	■	PES	PVC adh.	wave	black	PES	■	fabric
NAJ-8EXDV		2	■	■	-	-	-	PES	PVC adh.	roughtop	drk grn	PES	-	fabric
NAJ-8EEBV		2	■	■	■	-	-	PES	PVC adh.	roughtop	black	PES	-	fabric
NAL-12ELBV (G12/2LAB7)		2	■	■	-	■	-	PES	PVC adh.	long-groove	black	PES	■	fabric
NHB-5EKBV		1	■	■	■	-	-	PES	PVC hard	blank	black	PES	-	fabric
NHB-10EKBV		2	■	■	■	-	-	PES	PVC hard	blank	black	PES	■	fabric
NHB-10ESBV		2	■	■	■	-	■	PES	PVC	blank	black	PES	■	fabric
NHM-10EKBV		2	■	■	■	-	-	PES	PVC hard	matte	black	PES	■	fabric
NHU-8EAAV		2	■	■	-	-	-	PES	PVC hard	ultra glossy	black	TPU	-	impreg.
NHU-8EATV		2	■	■	-	-	-	PES	PVC hard	ultra glossy	trans.	PES	-	fabric
NHU-12EAAV		2	■	■	-	-	-	PES	PVC hard	ultra glossy	anthracite	TPU	-	impreg.
NMB-11ESBV		2	■	■	■	■	■	PES	PVC	blank	black	PES	-	impreg.
NMM-10EBAV		2	■	■	■	■	-	PES	PVC adh.	blank	drk grey	PES	-	fabric
NNT-10ENBU (NVT-223)		2	■	■	■	-	-	PES	PUR	impregnated	black	PES	■	fabric
NNT-10ESBU		2	■	■	■	-	■	PES	PUR	impregnated	black	PES	■	fabric
NNT-12ECDV		2	■	■	■	■	-	PES	PVC	impregnated	drk grn	TPU	-	impreg.
NNT-20ECDV		3	■	■	■	■	-	PES	PVC	impregnated	drk grn	TPU	-	impreg.
NSB-12EHAV (G12/3BSA7)		3	■	■	-	-	-	PES	PVC s-adh	blank	anthracite	PES	■	fabric
NSL-10ELBV		2	■	■	■	-	-	PES	PVC s-adh	long. groove	black	PES	■	fabric
NSL-10ESBV		2	■	■	■	-	■	PES	PVC s-adh	long. groove	black	PES	■	fabric
NSL-11ESBV		2	■	■	■	-	■	PES	PVC s-adh.	long groove	black	PES	■	fabric
NSW-5ELAV	1	■	■	■	-	-	PES	PVC s-adh	waffle	black	PES	■	fabric	
NVT-298	2	■	■	■	-	-	PES	PVC s-adh	quadrille	black	PES	■	fabric	
High Duty	HAL-12E	2	■	■	■	-	-	PES	EPDM	long. groove	green	PUR	-	impreg.
	HSL-8E	2	■	■	■	-	-	PES	TPU	long. groove	drk green	PES	-	impreg.
	HSW-5EB	2	■	■	■	■	-	PES	TPU s-adh.	waffle	black	PES	-	fabric
Economy	E-5EBBT	2	■	■	■	■	-	PES	TPU	blank	black	PES	-	fabric
	E-5EXBT	2	■	■	■	-	-	PES	TPU	blank	black	PES	-	fabric

	Class of chemical resistance	Joining	Thickness [in.]	Mass of belt per square foot (belt weight) m _b [lbs./sq. ft.]	Pulley diameter, minimum [in.]	Tensile force for 1% elongation per unit of width k1% [lbs./in.]	Admissible tensile force per unit of width k adm [lbs./in.]	Minimum Temperature [°F]	Maximum Continuous [°F]	Maximum Intermittent [°F]	Coefficient of friction μ on steel	Manufacturing width [in.]	Clipper	Alligator	Belt type
3	T,F,L	0.06	0.39	1.0	28.5	45.7	23	176	212	0.2	157	Y	-	-	SAB-5E
3	T,F,L	0.08	0.19	1.6	45.7	68.5	23	176	212	0.2	157	Y	-	-	SAB-8E
3	T,F,L	0.10	0.57	2.4	68.5	114.2	23	176	212	0.2	157	Z	-	-	SAB-12E
3	T,F,L	0.16	0.98	4.0	103	165.6	23	176	212	0.2	94	2SPHT	-	-	SAB-18E
3	T,F,L	0.16	0.82	2.0	45.7	68.5	14	140	212	0.2	94	Y	-	-	SAG-8E
4	T,L	0.20	0.86	3.1	68.5	114.2	-22	212	302	0.2	47	1A	-	-	SAG-12E
3	T,F,L	0.08	0.49	2.0	45.7	68.5	14	140	212	0.2	157	Y	-	-	SAQ-8E
3	T,F,L	0.07	0.37	0.8	28.5	46.0	14	140	212	0.2	94	Y	-	-	SAW-5E
3	T,F,L	0.06	0.39	1.0	28.5	45.7	23	176	212	0.2	157	Y	-	-	SNB-5E
3	T,F,L	0.08	0.49	1.6	45.7	68.5	23	176	212	0.2	157	Y	-	-	SNB-8E
3	T,F,L	0.10	0.57	3.1	68.5	114.2	23	176	212	0.2	157	Z	-	-	SNB-12E
3	T,F,L	0.13	0.8	4.0	103	117.3	23	176	212	0.2	157	2SHPT	-	-	SNB-18E
3	F,L	0.045	0.25	1.2	29	42.8	14	176	212	0.2	83	X	-	-	NAB-5EKBV
3	F,L	0.080	0.47	1.6	46	68.6	14	176	212	0.2	118	36LLSP	-	-	NAB-8EXDV
3	F,L	0.080	0.51	1.6	46	68.6	14	158	212	0.2	118	Y	-	-	NAB-10ELBV
3	F,L	0.080	0.47	1.6	57	85.7	14	158	212	0.2	118	Y	-	-	NAB-10ELDV
3	F,L	0.110	0.65	2.4	69	102.8	14	176	212	0.2	118	36LL	-	-	NAB-12EXDV
3	F,L	0.120	0.12	4.7	86	128.4	14	158	212	1.0	78	36LL	-	-	NAB-15EVDV
3	F,L	0.190	1.15	4.7	103	154.2	14	176	212	0.2	118	2HT	-	-	NAB-18EEAV
3	F,L	0.300	1.02	2.4	57	85.7	32	176	212	0.2	118	36LL	-	-	NAD-10ESBV
3	F,L	0.180	0.92	2.4	46	68.6	14	158	212	0.2	118	36LL	-	-	NAJ-8EXDV
3	F,L	0.210	0.92	2.4	46	68.6	14	158	212	0.35	72	1	-	-	NAJ-8EEBV
3	F,L	0.110	0.61	2.0	69	102.8	14	158	212	0.2	98	36LL	-	-	NAL-12ELBV
3	F,L	0.040	0.25	1.0	29	42.8	32	176	212	0.2	94	X	-	-	NHB-5EKBV
3	F,L	0.080	0.51	1.2	57	85.7	32	176	212	0.2	118	36LLSP	-	-	NHB-10EKBV
3	F,L	0.120	0.72	1.6	57	85.7	32	176	212	0.2	118	1	-	-	NHB-10ESBV
3	F,L	0.080	0.51	1.6	46	68.6	14	176	212	0.2	118	X	-	-	NHM-10EKBV
3	F,L	0.080	0.47	2.0	46	88.6	32	176	212	0.2	118	36LLSP	-	-	NHU-8EAAV
3	F,L	0.080	0.47	2.0	46	68.6	32	176	212	0.2	118	36LLSP	-	-	NHU-8EATV
3	F,L	0.120	0.78	4.0	69	102.8	32	176	212	0.2	118	36LLSP	-	-	NHU-12EAAV
3	F,L	0.100	0.61	2.4	57	85.7	32	176	212	0.2	118	Z	-	-	NMB-11ESBV
3	F,L	0.095	0.57	1.2	57	85.7	14	140	212	0.2	118	Z	-	-	NMM-10EBAV
3	F,L	0.080	0.50	1.2	57	85.7	32	176	212	0.2	118	36LLSP	-	-	NNT-10ENBU
3	F,L	0.09	0.51	3.2	69	102.8	32	176	212	0.2	118	1	-	-	NNT-10ESBU
3	F,L	0.090	0.57	3.2	69	102.8	32	176	212	0.2	98	36LLSP	-	-	NNT-12ECDV
3	F,L	0.140	0.82	3.9	114	171.3	32	176	212	0.2	98	36LL	-	-	NNT-20ECDV
3	F,L	0.180	1.15	2.8	69	102.8	14	176	212	0.2	118	36LLSP	-	-	NSB-12EHAV
3	F,L	0.090	0.51	1.2	57	85.7	14	176	212	0.2	118	36LLSP	-	-	NSL-10ELBV
3	F,L	0.090	0.51	2.0	57	85.7	32	176	212	0.2	118	36LL	-	-	NSL-10ESBV
3	F,L	0.120	0.72	1.6	57	94.3	32	176	212	0.25	118	1	-	-	NSL-11ESBV
3	F,L	0.050	0.30	1.0	29	42.8	14	158	212	0.2	118	Y	-	-	NSW-5ELAV
3	F,L	0.090	0.49	1.6	57	44.3	14	158	212	0.2	118	Y	-	-	NVT-298
4	T,L	0.100	0.47	2.4	68.5	114.2	22	212	302	0.2	47	Y	-	-	HAL-12E
6	T,F,L	0.070	0.40	1.6	45.7	68.5	-22	176	212	0.2	94	Y	-	-	HSL-8E
6	F,L	0.060	0.33	0.6	28.5	45.7	-22	176	212	0.2	94	Y	-	-	HSW-5EB
6	T,F,L	0.060	0.33	1.2	28.5	45.7	-22	176	230	0.2	94	Y	-	-	E-5EBBT
6	T,F,L	0.050	0.27	0.6	28.5	45.7	-22	176	230	0.2	94	Y	-	-	E-5EXBT

Explanations

- = applicable
- = conditionally applicable
- = not applicable

drk. grn = dark green
 drk grey = dark grey
 EPDM sadh. = ethylene propylene terpolymer super adhesive
 impreg. = impregnated
 NBR = acrylo-nitrile-butadiene rubber
 PES = polyester
 PUR = polyurethane, cross-linked
 PVC = polyvinylchloride
 PVC adh. = polyvinylchloride adhesive
 PVC s-adh. = polyvinylchloride super adhesive
 TPU = polyurethane, thermo-plastic
 trans. = transparent

Flame retardant

A = Available

Joining

T = Thermofix
 F = Flexproof
 L = Laced

All data are approximate values under standard climatic conditions: 23°C/73°F and 50% relative humidity.

Product group	Belt type	PLY	For slider bed	For carrying roller	Permanently antistatic	For Power turns, troughing	Flame retardant	Tension member, material	Conveying side, material	Conveying side, surface	Conveying side, color	Back side, material	Low noise, back side	Back side, surface
Allveyor	A90COS-B	-	■	■	-	-	-	PES	PVC	blank	black	PVC	-	impreg.
	A90FBS-B	-	■	■	-	-	-	PES	PVC	impregnated	black	PVC	-	impreg.
	A120CBS-B	-	-	■	-	-	-	PES	PVC	blank	black	PVC	-	blank
	A120CHEV-B	-	■	■	-	-	-	PES	PVC	chevron	black	PVC	-	impreg.
	A120COS-B	-	■	■	-	-	-	PES	PVC	blank	black	PVC	-	impreg.
	A120CRES-B	-	■	■	-	-	-	PES	PVC	crescent	black	PVC	-	impreg.
	A120FBS-B	-	■	■	-	-	-	PES	PVC	impregnated	black	PVC	-	impreg.
	A120HLTP-B	-	■	■	-	-	-	PES	PVC	rougtop	black	PVC	-	impreg.
	A120RT-B	-	■	■	-	-	-	PES	PVC	rougtop	black	PVC	-	impreg.
	A150COS-B	-	■	■	-	-	-	PES	PVC	blank	black	PVC	-	impreg.
	A150FBS-B	-	■	■	-	-	-	PES	PVC	impregnated	black	PVC	-	impreg.
	A200COS-B	-	■	■	-	-	-	PES	PVC	blank	black	PVC	-	impreg.
	A200FBS-B	-	■	■	-	-	-	PES	PVC	impregnated	black	PVC	-	impreg.
	APH120FBS	-	■	■	-	-	■	PES	PVC	impregnated	black	PVC	-	impreg.
	APH120RT	-	■	■	-	-	■	PES	PVC	rougtop	black	PVC	-	impreg.
	APH150HTS	-	■	■	-	-	■	PES	PVC	impregnated	black	PVC	-	impreg.
APH150RT	-	■	■	-	-	■	PES	PVC	rough top	black	PVC	-	impreg.	
APH200HFS	-	■	■	-	-	■	PES	PVC	impregnated	black	PVC	-	impreg.	
Polymate	PM100RCOS-B	-	■	■	-	■	-	PES	RMP	blank	black	RMP	■	impreg.
	PM120FBS-B	-	■	■	-	■	-	PES	NITRILE	buffed	black	NITRILE	■	impreg.
	PMKLNGBR	-	■	■	-	-	-	PES	NITRILE	rougtop	brown	NITRILE	■	impreg.
	PMKLNGB	-	■	■	-	■	-	PES	SBR	rougtop	black	SBR	■	impreg.
PMRT-B	-	■	■	-	■	-	PES	PVC	tyler wire	black	PVC	■	impreg.	
Trackmate	TM120FBS-B	-	■	■	-	■	-	PES	PVC	buffed	black	PVC	■	buffed
	TM120LR-B	-	■	■	-	■	-	PES	PVC	long. rib	black	PVC	■	impreg.
	TM120RT-B	-	■	■	-	-	-	PES	PVC	rougtop	black	PVC	■	buffed
	TM447-B	-	■	■	-	■	-	PES	PVC	rougtop	black	PVC	■	buffed
	TMIPH135LR	-	■	■	-	■	■	PES	PVC	long. rib	black	PVC	■	impreg.
	TMIPH529FBS	-	■	■	-	■	■	PES	PVC	buffed	black	PVC	■	buffed
	TMIPH533EMB	-	■	■	-	■	■	PES	PVC	embossed	black	PVC	■	buffed
TMIPH633EMB	-	■	■	-	■	■	PES	PVC	embossed	black	PVC	■	buffed	
Ulti-Mate	UM80SC-B	-	■	■	■	■	-	PES	NITRILE	buffed	black	NITRILE	■	buffed
	UM140SC-B	-	■	■	■	■	-	PES	NITRILE	buffed	black	NITRILE	■	buffed
	UM140HMBOS-B	-	■	■	■	■	-	PES	NITRILE	buffed	black	NITRILE	■	friction
	UM140HMSD-B	-	■	■	■	■	-	PES	PUR	friction	black	NITRILE	■	friction
	UM240SC-B	-	■	■	■	■	-	PES	NITRILE	buffed	black	NITRILE	■	buffed
	UM240-G	-	■	■	-	■	-	PES	NITRILE	buffed	green	NITRILE	■	buffed
UMPH150HFS	-	■	■	■	■	■	PES	NITRILE	buffed	black	NITRILE	■	buffed	
Rubber	R2NCOS-B	2	■	■	-	-	-	PES	NITRILE	blank	black	NITRILE	-	friction
	R2-160RTXB-GP (R2SBRRT-B)	2	■	■	-	-	-	PES	SBR	rougtop	black	PES	-	friction
	R3KLNGBR	3	■	■	-	-	-	PES	NITRILE	rougtop	brown	NITRILE	-	friction
	RGLIDE-T	4	■	■	-	-	-	PES	NYLON	bare	tan	PES	-	friction
	R3GUMRT-T	3	■	■	-	-	-	PES	GUM RUBBER	rougtop	tan	PES	-	friction
	RPH2-90BXB-FR	2	■	-	■	-	■	PET	RFL FABRIC	impreg. fabric	black	PET	-	impreg.
	RPH2-90TXB-FR	2	■	-	■	-	■	PET	NEOPRENE	fine structure	black	RFL FABRIC	-	impreg.
	RPH3-135BXB-FR	3	■	■	■	-	■	PET	RFL FABRIC	impreg. fabric	black	RFL FABRIC	-	impreg.
	RPH3-200BXB-FR	3	■	■	■	-	■	PET	RFL FABRIC	impreg. fabric	black	RFL FABRIC	■	impreg.
	RPH3-265BXB-FR	3	■	■	■	-	■	PET	RFL FABRIC	impreg. fabric	black	RFL FABRIC	■	impreg.
RPH2-160TXB-FR	2	■	■	■	-	■	PET	NEOPRENE	fine structure	black	RFL FABRIC	-	impreg.	

	Class of chemical resistance	Joining	Thickness [in.]	Mass of belt per square foot (belt weight) m _b [lbs./sq.ft.]	Pulley diameter, minimum [in.]	Tensile force for 1% elongation per unit of width k ₁ [lbs./in.]	Admissible tensile force per unit of width k _{adm} [lbs./in.]	Minimum Temperature [°F]	Maximum Temperature [°F]	Maximum Intermittent [°F]	Coefficient of friction μ on steel	Manufacturing width [in.]	Clipper	Alligator	Belt type
3	L,F	0.115	0.72	2.0	-	90	-10	180	180	0.35	72	1	15	A90COS-B	
3	L,F	0.100	0.54	2.0	-	90	-10	180	180	0.35	72	1-D	1	A90FBS-B	
3	L,F	0.160	1.02	3.0	-	120	-10	180	180	0.9	72	1	15	A120CBS-B	
3	L,F	0.210	0.96	4.0	-	120	-10	180	180	0.35	72	1	7	A120CHEV-B	
3	L,F	0.135	0.94	3.0	-	120	-10	180	180	0.35	72	1	15	A120COS-B	
3	L,F	0.240	0.94	3.5	-	120	-10	180	180	0.35	72	2	7	A120CREB-B	
3	L,F	0.125	0.66	3.0	-	120	-10	180	180	0.35	72	1	7	A120FBS-B	
3	L,F	0.295	1.02	4.0	-	120	-10	180	180	0.35	72	1	7	A120HLTP-B	
3	L,F	0.245	1.00	3.0	-	120	-10	180	180	0.35	72	2	15	A120RT-B	
3	L,F	0.165	1.08	4.0	-	150	-10	180	180	0.35	72	2	20	A150COS-B	
3	L,F	0.150	0.72	3.0	-	150	-10	180	180	0.35	72	1	15	A150FBS-B	
3	L,F	0.220	1.26	6.0	-	200	-10	180	180	0.35	72	4	27	A200COS-B	
3	L,F	0.220	0.96	6.0	-	200	-10	180	180	0.35	72	3	25	A200FBS-B	
3	L,F	0.165	0.60	2.5	-	120	-10	180	180	0.24	72	2HT	-	APH120FBS	
3	L,F	0.245	1.00	3.0	-	120	-10	180	180	0.24	72	2HT	-	APH120RT	
3	L,F	0.205	1.13	6.0	-	175	-10	180	180	0.3	72	3HT	25	APH150HTS	
3	L,F	0.275	1.08	3.5	-	150	-10	180	180	0.24	72	2HT	15	APH150RT	
3	L,F	0.205	1.20	4.0	-	200	-10	180	180	0.24	72	3HT	-	APH200HFS	
#	L,F	0.110	0.66	1.5	-	100	10	160	180	0.2	72	#125	-	PM100RCOS-B	
#	L,F	0.115	0.48	2.0	-	120	10	175	250	0.2	72	#125	-	PM120FBS-B	
#	L,F	0.280	0.90	3.0	-	110	10	175	250	0.2	72	#125	-	PMKLNGBR	
#	L,F	0.280	0.90	3.0	-	110	10	175	250	0.2	72	#125	-	PMKLNGB	
#	L,F	0.155	0.84	2.0	-	110	10	160	180	0.2	72	#125	-	PMRT-B	
3	L,F	0.100	0.60	1.5	-	120	-10	180	180	0.24	72	#125	-	TM120FBS-B	
3	L,F	0.155	0.78	1.5	-	120	-10	180	180	0.20	72	#125	-	TM120LR-B	
3	L,F	0.225	0.90	3.5	-	120	-10	180	180	0.25	72	#125	-	TM120RT-B	
3	L,F	0.200	0.84	3.0	-	150	-10	180	180	0.20	72	#125	-	TM447RT-B	
3	L,F	0.225	1.40	3.0	-	120	-10	180	180	0.20	72	#2HT	-	TMIPH135LR	
3	L,F	0.125	0.76	2.0	-	150	-10	180	180	0.20	72	#2HT	-	TMIPH529FBS	
3	L,F	0.150	0.96	2.0	-	200	-10	180	180	0.20	72	#2HT	-	TMIPH533EMB	
3	L,F	0.150	0.96	2.0	-	200	-10	180	180	0.20	72	#2HT	-	TMIPH633EMB	
#	L,F	0.100	0.36	1.0	-	90	10	175	250	0.25	72	1/D	#62	UM80SC-B	
#	L,F	0.140	0.48	2.0	-	135	10	175	250	0.25	72	2	#125	UM140SC-B	
#	L,F	0.145	0.42	1.5	-	130	10	175	250	0.20	72	2SP	#125	UM140HMBOS-B	
#	L,F	0.145	0.54	2.0	-	130	10	175	250	0.20	72	2SP	62	UM140HMSD-B	
#	L,F	0.220	0.84	5.0	-	135	10	175	250	0.25	72	3	#187	UM240SC-B	
#	L,F	0.220	0.84	5.0	-	135	10	175	250	0.25	72	3	#187	UM240-G	
#	L,F	0.200	0.80	3.5	-	150	10	180	250	0.20	72	3HT	#187	UMPH150HFS	
#	L,T	0.099	0.70	2.0	-	30	0	175	250	0.25	72	1A	7	R2NCOS-B	
#	L,T	0.315	1.10	3.0	-	150	-20	180	250	0.25	72	#2HT	35	R2-160RTXB-GP	
#	L,T	0.281	1.22	2.5	-	48	0	200	250	0.25	72	4	27	R3KLNGBR	
#	L	0.125	0.78	2.0	-	48	0	200	250	0.25	72	1	7	RGLIDE-T	
#	L,T	0.275	1.20	2.5	-	150	-40	180	250	0.30	72	3	15	R3GUMRT-T	
#	L,F	0.10	0.50	2.0	-	90	-20	180	225	0.15	78	#1	N/A	RPH2-90BxB-FR	
#	L,F	0.135	0.80	2.0	-	90	-20	180	225	0.35	72	#1	N/A	RPH2-90TXB-FR	
#	L,F	0.145	0.85	3.5	-	135	-20	180	225	0.15	78	#3HT	N/A	RPH3-135BxB-FR	
#	L,F	0.145	0.85	3.5	-	200	-20	180	225	0.15	78	#3HT	N/A	RPH3-200BxB-FR	
#	L,F	0.185	1.10	8.0	-	265	-20	180	225	0.15	78	2	N/A	RPH3-265BxB-FR	
#	L,F	0.10	0.60	4.0	-	150	-20	180	225	0.16	72	#2HT	N/A	RPH2-160TXB-FR	

Explanations

- = applicable
- = conditionally applicable
- = not applicable

CBS = cover both sides
 COS = cover one side
 drk. grn = dark green
 drk grey = dark grey
 FBS = friction both sides
 impreg. = impregnated
 nat. rubber = natural rubber
 neo. rubber = neoprene rubber
 NBR = acrylo-nitrile-butadiene rubber
 PES = polyester
 PUR = polyurethane, cross-linked
 PVC = polyvinylchloride
 PVC adh. = polyvinylchloride adhesive
 PVC hard = polyvinylchloride hard
 PVC s-adh. = polyvinylchloride super adhesive
 RMP = rubber modified product
 SBR = styrene butadiene rubber
 TPE = thermoplastic elastomer
 TPU = polyurethane, thermo-plastic
 trans. = transparent

Flame retardant
 A = Available

Chemical resistance

= Reference NIBA Chemical Resistance Guide

Joining

T = Thermofix
 F = Flexproof
 L = Laced

All data are approximate values under standard climatic conditions: 23°C/73°F and 50% relative humidity.

Product group	Belt type	PLY	For slider bed	For carrying roller	Permanently antistatic	Approved for food transport	For power turns, troughing	Tension member, material	Conveying side, material	Conveying side, surface	Conveying side, color	Back-side, material	Back-side, surface
Food	FAB-12E	2	■	■	■	F,E,U	-	PES	TPU-adh.	blank	white	PES	impreg.
	FAB-5EB	2	■	■	■	F,E,U	■	PES	TPU-adh.	blank	white	PES	impreg.
	FAB-5EIIWH	2	■	■	■	F,E,U	-	PES	TPU-adh.	blank	white	PES	impreg.
	FAB-5EQ	2	■	■	-	F,E,U	-	PES	TPU-adh.	blank	white	PES	impreg.
	FAB-5ER	2	■	■	-	F,U	-	PES	SI-adh.	blank	white	PES	impreg.
	FAF-12E	2	■	■	■	F,E,U	-	PES	TPU-adh.	herringbone	white	PES	impreg.
	FAW-5E	2	■	■	■	F,E,U	-	PES	TPU-adh.	waffle	white	PES	impreg.
	FAZ-4EQWZ	2	■	-	-	F,E,U	-	PES	TPU-adh.	zigzag	white	PES	impreg.
	FMB-2EQ	1	■	■	-	F,E,U	-	PES	TPU	blank	white	PES	fabric
	FMB-5EQ (Spun Polyester)	2	■	■	-	F,E,U	■	PES	TPU	blank	white	PES	impreg.
	FMB-10EI (F10/2BMT3E)	2	■	■	■	F,E,U	-	PES	TPU	blank	transp.	PES	impreg.
	FMD-2EIH (F2/1DAH3E)	1	■	-	■	F,E,U	-	PES	TPU	rhomboid	amber	PES	impreg.
	FNB-5EQ	2	■	■	-	F,E,U	-	PES	TPU	blank	white	TPU	impreg.
	FNI-5E	2	■	■	■	F,E,U	-	PES	TPU	impreg.	white	PES	impreg.
	FNI-5EI (Spun Polyester)	2	■	■	■	F,E,U	■	PES	TPU	impreg.	white	PES	impreg.
	FNI-5ER	2	■	■	-	F,U	-	PES	SI	impreg.	white	PES	impreg.
	FNT-5EC	2	■	■	-	F	-	PES/CO	PES/CO	fabric	white	PES/CO	fabric
	FNT-5EI (Spun Polyester)	2	■	■	-	F,E,U	■	PES	PES Fabric	fabric	white	PES	impreg.
	FNT-5P	2	■	■	-	F,E	-	PA	PA	fabric	lt. grey	PA	fabric
	FNT-5PC	2	■	■	-	F	-	PA/CO	PA/CO	fabric	white	PA/CO	fabric
WWT-119	3	■	■	■	F,E,U	-	PES	PVC	blank	white	PES	fabric	
WWT-120	-	■	■	-	F,E,U	-	TPU	TPU	blank	white	TPU	blank	
WWT-123	2	■	■	■	F,E,U	-	PES	TPU-adh.	sawtooth	white	PES	impreg.	
Economy	F-2EQWT (XVT-1708)	1	■	-	-	F,E,U	-	PES	TPU	blank	white	PES	impreg.
	F-5ENWT (XVT-1646)	2	■	■	■	F,E,U	-	PES	TPU	blank	white	PES	fabric
	F-5EQWT (XVT-1615)	2	■	■	-	F,E,U	-	PES	TPU	blank	white	PES	impreg.
	F-8EQWT	2	■	■	-	F,E,U	-	PES	TPU	blank	white	PES	impreg.
	F-3EXWT	1	■	-	■	F,E,U	-	PES	TPU	blank	white	PES	impreg.
	F-8EXWT	2	■	■	■	F,E,U	-	PES	TPU	blank	white	PES	impreg.
Cleanline	CAB-5E	2	■	■	■	F,E,U	-	PES	Habilene-adh.	blank	white	PES	impreg.
	CAB-8E	2	■	■	■	F,E,U	-	PES	Habilene-adh.	blank	white	PES	impreg.
	CNB-5E	2	■	■	■	F,E,U	-	PES	Habilene	blank	white	PES	impreg.
	CNB-5EVWW	2	■	■	■	F,E,U	-	PES	Habilene	blank	white	Habilene	waffle structure
	CNB-6EB	2	■	■	■	F,E,U	■	PES	Habilene	blank	white	PES	impreg.
	CNB-8E	2	■	■	■	F,E,U	-	PES	Habilene	blank	white	PES	impreg.
	CNW-5E	2	■	■	■	F,E,U	-	PES	Habilene	waffle	white	PES	impreg.
HabaGUARD - Conveyor belting containing an antimicrobial additive*													
HabaGUARD	FAB-2E+H15	1	■	-	■	F,E,U	-	PES	TPU-adh.	blank	white	PES	impreg.
	FAB-5E+H15	2	■	■	■	F,E,U	-	PES	TPU-adh.	blank	white	PES	impreg.
	FAB-8E+H15	2	■	■	■	F,E,U	-	PES	TPU-adh.	blank	white	PES	impreg.
	FNB-5E+H15	2	■	■	■	F,E,U	-	PES	TPU	blank	white	PES	impreg.
	FNB-6EV+H15	2	■	■	■	F,U	-	PES	TPU	blank	white	TPU	blank
	FNB-8E+H15	2	■	■	■	F,E,U	-	PES	TPU	blank	white	PES	impreg.
	FNB-12EVCQ+H15	2	■	■	-	F,U	-	PES	TPU	blank	cobalt blue	TPU	quadrille pattern
	PM135RCOS-W+H15	2	■	■	-	F,U	■	PES	RMP	blank	white	PES	non-woven
	PM135RCOS-T+H15	2	■	■	-	F,U	■	PES	RMP	blank	white	PES	non-woven
Zero Fray	FMB-4KZWT	1	■	■	-	F,E,U	-	PES	TPU	blank	white	TPU	fine structure
	FMB-5KZWT	2	■	■	-	F,E,U	-	PES	TPU	blank	white	PES	impreg.
	FNB-6EZCT	2	■	■	-	F,E,U	-	PES	TPU	blank	cobalt blue	PES	impreg.

* This product does not protect users or others against food borne or disease causing bacteria. Proper cleaning should always be adhered to.

	Class of chemical resistance	Joining	Thickness [in.]	Mass of belt per square foot (belt weight) m _b [lbs./sq.ft.]	Pulley diameter, minimum [in.]	Tensile force for 1% elongation per unit of width k ₁ % [lbs./in.]	Admissible tensile force per width k _{adm} [lbs./in.]	Minimum Temperature [°F]	Maximum Temperature [°F]	Maximum Intermittent [°F]	Coefficient of friction μ of back side on steel	Manufacturing width [in.]	Clipper	Alligator	Belt type
6	T,F,L	0.10	0.53	2.4	68.5	114.2	-22	176	230	0.20	157	-	-	FAB-12E	
6	T,F,L	0.06	0.29	0.16	28.5	45.7	-22	176	230	0.20	157	2SP	00	FAB-5EB	
6	T,F,L	0.05	0.28	0.32	29.0	45.7	-22	212	248	0.20	94	2SP	00,1S	FAB-5EIWH	
6	T,F,L	0.05	0.29	0.16	28.5	45.7	-22	176	230	0.20	157	2SP	00	FAB-5EQ	
6	T,F,L	0.04	0.21	0.16	28.5	45.7	-22	176	230	0.20	94	#25SP	-	FAB-5ER	
6	F,L	0.18	0.76	2.4	68.5	114.2	-22	176	230	0.20	47	-	-	FAF-12E	
6	T,F,L	0.06	0.29	0.16	28.5	45.7	-22	176	230	0.20	94	2SP	1S	FAW-5E	
6	F	0.03	0.14	0.58	22.8	34.3	-4	176	230	0.20	79	-	-	FAZ-4EQWZ	
6	F	0.06	0.28	0.6 ⁽⁴⁾	17.0	23.0	-22	176	230	0.20	79	-	-	FMB-2EQ	
6	F	0.06	0.31	0.6 ⁽⁴⁾	57.0	91.0	-22	176	230	0.20	79	-	-	FMB-5EQ	
6	T,F,L	0.06	0.33	1.0	57.1	91.4	-22	176	-	0.20	94	-	00,1S	FMB-10EI	
6	F	0.02	0.12	0.16	11.4	17.1	-22	176	-	0.20	94	#25SP	-	FMD-2EIH	
6	T,F,L	0.05	0.29	0.6 ⁽⁴⁾	28.5	45.7	-22	176	230	0.20	157	2SP	00,1S	FNB-5EQ	
6	T,F,L	0.04	0.18	0.6 ⁽⁴⁾	28.5	45.7	5	176	230	0.20	157	#25SP	00	FNI-5E	
6	T,F,L	0.05	0.29	0.6 ⁽⁴⁾	28.5	45.7	-22	176	230	0.20	94	#25SP	00,1S	FNI-5EI	
6	T,F,L	0.04	0.18	0.6 ⁽⁴⁾	28.5	45.7	-22	176	230	0.20	47	-	00	FNI-5ER	
6	T,F,L	0.07	0.29	0.6 ⁽⁴⁾	28.5	45.7	-22	176	230	0.25	94	2SP	1S	FNT-5EC	
6	T,F,L	0.05	0.29	0.6 ⁽⁴⁾	28.5	45.7	-22	176	230	0.15	94	2SP	00,1S	FNT-5EI	
6	T,L	0.04	0.18	0.80	28.5	68.5	4	212	230	0.20	94	2SP	00	FNT-5P	
6	T,F,L	0.05	0.22	0.6 ⁽⁴⁾	28.5	68.5	-22	176	230	0.25	94	2SP	00	FNT-5PC	
7	SFS	0.19	1.13	3.9	69.0	137.0	14	176	-	0.20	79	-	-	WWT-119	
6	Q,F	0.04	0.18	0.3	2.0	11.0	32	140	-	-	39	-	-	WWT-120	
6	F,L	0.09	0.41	2.4	45.7	68.5	-22	176	230	0.20	47	2SP	7S	WWT-123	
6	T,F,L	0.03	0.14	0.6 ⁽⁴⁾	11.4	17.1	-22	176	230	0.20	94	-	-	F-2EQWT	
6	T,F,L	0.07	0.41	1.0	28.5	45.7	-22	176	230	0.20	157	2SP	1S	F-5ENWT	
6	T,F,L	0.05	0.27	0.6 ⁽⁴⁾	28.5	45.7	-22	176	230	0.20	157	2SP	00,1S	F-5EQWT	
6	T,F,L	0.06	0.35	0.80	45.7	74.2	-22	176	230	0.20	157	2SP	1S	F-8EQWT	
6	T,F,L	0.04	0.24	0.6 ⁽⁴⁾	26.0	34.3	-22	176	230	0.20	157	25SP	00	F-3EXWT	
6	T,F,L	0.06	0.35	0.80	45.7	74.2	-22	176	230	0.20	157	2SP	00,1S	F-8EXWT	
10	F	0.05	0.30	0.8 ⁽⁴⁾	40.0	63.0	-40	158	-	0.20	94	2SP	00,1S	CAB-5E	
10	F	0.08	0.37	1.20	46.0	74.0	-40	158	-	0.20	94	2SP	1S, 7S	CAB-8E	
10	F	0.05	0.30	0.8 ⁽⁴⁾	40.0	63.0	-40	176	-	0.20	94	2SP	1S	CNB-5E	
10	F	0.09	0.40	1.60	40.0	63.0	-40	176	230	0.50	94	2SP	7S	CNB-5EVWW	
10	F	0.04	0.23	0.6 ⁽⁴⁾	34.0	46.0	-40	176	230	0.20	94	-	-	CNB-6EB	
10	F	0.08	0.37	1.20	46.0	74.0	-40	176	230	0.20	94	2SP	1S	CNB-8E	
10	F	0.07	0.33	1.2*	40.0	63.0	-40	176	230	0.20	94	2SP	7S	CNW-5E	
6	T,F,L	0.03	0.14	0.6 ⁽⁴⁾	11.4	17.1	-22	176	230	0.20	157	-	00	FAB-2E+H15	
6	T,F,L	0.05	0.29	0.6 ⁽⁴⁾	28.5	45.7	-22	176	230	0.20	157	2SP	00,1S	FAB-5E+H15	
6	T,F,L	0.06	0.37	0.80	45.7	68.5	-22	176	230	0.20	157	2SP	7S	FAB-8E+H15	
6	T,F,L	0.05	0.29	0.6 ⁽⁴⁾	28.5	45.7	-22	176	230	0.20	157	2SP	00,1S	FNB-5E+H15	
6	F	0.06	0.33	0.80	46.0	69.0	-22	176	230	0.60	94	2SP	1S	FNB-6EV+H15	
6	T,F,L	0.06	0.36	0.80	45.7	68.5	-22	176	230	0.20	157	2SP	00,1S	FNB-8E+H15	
6	F	0.07	0.45	0.80	69.0	109.0	-22	176	230	0.40	94	2SP	1S	FNB-12EVCQ+H15	
5	F	0.145	0.70	2.0	-	135.0	10	180	-	0.25	72	#2	#15	PM135RCOS-W+H15	
5	F	0.145	0.70	2.0	-	135.0	10	180	-	0.25	72	#2	#15	PM135RCOS-T+H15	
6	F	0.06	0.33	0.59	28.6	45.7	-4	212	-	0.30	79	-	-	FMB-4KZWT	
6	F	0.08	0.45	0.79	34.3	57.1	-4	176	-	0.50	79	-	-	FMB-5KZWT	
6	F	0.05	0.27	0.6 ⁽⁴⁾	34.0	57.0	-4	212	-	0.25	79	-	-	FNB-6EZCT	

Explanations

- = applicable
- = conditionally applicable
- = not applicable

Habilene = modified TPO

impreg. = impregnated w/TPU

lt. grey = light grey

FP = fluoropolymer

PA = polyamide

PES = polyester fabric

PES/CO = polyester/cotton

PUR = polyurethane, cross-linked

PVC = polyvinylchloride

PVC adh. = polyvinylchloride adhesive

PVC s-adh. = polyvinylchloride super adhesive

RMP = rubber modified product

SI = silicone

TPE = thermoplastic elastomer

TPU = polyurethane, thermoplastic

transp. = transparent

Class of chemical resistance

(1) Under extreme humidity/wet operating conditions admissible tensile only 158°F

(2) Without counter bend

(3) Running side class of chemical resistance :6

(4) Nosebar radius = 0.16 in. or 4 mm

Joining

T = Thermofix

F = Flexproof

L = Laced

Q= Quickmelt

S= Sewn

SF= StepFlex

Approved for Food Transport

F = FDA

E = EU Conformable

U = USDA

3A Dairy Approved

FNB-6EV

FNB-12EVCQ

All data are approximate values under standard climatic conditions: 23°C/73°F and 50% relative humidity.

B

FOOD

Product group	Belt type	PLY	For slider bed	For carrying roller	Permanently antistatic	Approved for food transport	For power turns	Tension member, material	Conveying side, material	Conveying side, surface	Conveying side, color	Back side, material	Back side, surface
Allveyor	A120COS/S-W	-	■	■	-	F,U	-	PES	PVC	blank	white	PVC	skim
	A125COS-W	-	■	■	-	F,U	-	PES	PVC	blank	white	PVC	impreg.
	A155COS-W	-	■	■	-	F,U	-	PES	PVC	blank	white	PVC	impreg.
N-Line	NAB-5EFWV	1	■	■	-	F,E,U	-	PES	PVC-adh.	blank	white	PES	fabric
	NAB-10EFWV	2	■	■	-	F,E,U	-	PES	PVC-adh.	blank	white	PES	fabric
	NAB-12EFWV	2	■	■	-	F,E,U	-	PES	PVC-adh.	blank	white	PES	impreg.
	NAB-8EIWV	2	■	■	■	F,E,U	-	PES	PVC-adh.	blank	white	PES	impreg.
	NAW-8EIWV	2	■	■	■	F,E,U	-	PES	PVC-adh.	waffle	white	PES	impreg.
	NNI-5EFTU	1	■	-	■	F	-	PES	TPU	fabric	trans.	PES	impreg.
	NNR-5RFWR	2	■	■	-	F	-	PES/CO	PES/CO	fabric	white	PES/CO	fabric
	NNT-8EFWE	2	■	■	-	F	-	PES	PES	fabric	off-white	PES	fabric
	NVT-251	2	■	■	■	F,E	-	PES	PES	fabric	off-white	PES	fabric
	NVT-287	2	■	■	■	F	-	PES	PES/CO	fabric	white	PES	impreg.
Polymate*	PM100RCOS-W	-	■	■	-	F	■	PES	TPE	blank	white	PES	adh.
	PM403FBS-BR	-	■	■	-	F	■	PES	NITRILE	buffed	brown	PES	buffed
	PM405FBS-BR	-	■	■	-	F	■	PES	NITRILE	buffed	brown	PES	buffed
	PMKLNGBR	-	■	■	-	F	■	PES	NITRILE	rough top	brown	PES	buffed
	PMRT-W	-	■	■	-	F	■	PES	PVC	tyler wire	white	PES	buffed
Rubber	R2TW-W	2	■	■	-	F	-	PES	NITRILE	tyler wire	white	RUBBER	skim coat
	R3TW-W	3	■	■	-	F	-	PES	NITRILE	tyler wire	white	RUBBER	skim coat
	R3TEF-W	3	■	■	-	F,U	-	PES	TEFLON	blank	white	NITRILE	friction
	R3BUT-W	3	■	■	-	F,U	-	PES	BUTYL	blank	white	BUTYL	friction
Cottonmate	CM100FBS	-	■	■	-	F	■	PES	COTTON	fabric	white	COTTON	fabric
	CM200FBS	-	■	■	-	F	■	PES	COTTON	fabric	white	COTTON	fabric
SWC	SWC/2	2	■	■	-	F	-	COTTON	COTTON	fabric	natural	COTTON	fabric
	SWC/3	3	■	■	-	F	-	COTTON	COTTON	fabric	natural	COTTON	fabric
	SWC/4	4	■	■	-	F	-	COTTON	COTTON	fabric	natural	COTTON	fabric
	SWC/Fine Weave (SWC/FW)	2	■	■	-	F	-	COTTON	COTTON	fabric	natural	COTTON	fabric
	SWC/104 Duck (SWC/104D)	1	■	■	-	F	-	COTTON	COTTON	fabric	natural	COTTON	fabric
SWP	SWP/2 Ply Heat Set	2	■	■	-	F	-	PES	PES	texture	white	PES	texture
	SWP/4 Ply Heat Set	4	■	■	-	F	-	PES	PES	texture	white	PES	texture
Ulti-Mate	UM80-W	-	■	■	-	F	■	PES	NITRILE	buffed	white	PES	buffed

*NOTE: See additional Polymate Food Types on Page 6 under HabaGUARD section.

	Class of chemical resistance	Joining	Thickness [in.]	Mass of belt per square foot (belt weight) m _b [lbs./sq.ft.]	Pulley diameter, minimum [in.]	Tensile force for 1% elongation per unit of width k ₁ % [lbs./in.]	Admissible tensile force per width k _{adm} [lbs./in.]	Minimum Temperature [°F]	Maximum Continuous [°F]	Maximum Intermittent [°F]	Coefficient of friction μ of back side on steel	Manufacturing width [in.]	Clipper	Alligator	Belt type
-	L	0.150	0.075	3.5	-	120	-10	180	180	0.09	72	1	15	A120COS/S-W	
-	L	0.135	0.065	3	-	125	-10	180	180	0.35	72	1	7	A125COS-W	
-	L	0.155	0.075	3.5	-	155	-10	180	180	0.35	72	2	20	A155COS-W	
7	F,L	0.04	0.25	0.60	28.5	42.7	14	158	-	0.25	118	X	2SP	NAB-5EFVW	
7	F,L	0.08	0.47	1.6	45.7	85.6	14	158	-	0.25	118	Y	2SP	NAB-10EFVW	
7	F,L	0.11	0.65	3.15	68.5	102.7	14	158	-	0.25	118	Z	-	NAB-12EFVW	
7	F,L	0.08	0.47	1.0	45.7	68.5	14	158	-	0.25	118	Y	2SP	NAB-8EIWV	
7	F,L	0.08	0.47	1.0	45.7	68.5	14	158	-	0.25	118	Y	2SP	NAW-8EIWV	
7	F,L	0.02	0.07	NB	28.5	34.2	5	176	-	0.25	118	Y	2SP	NNI-5EFTU	
3	F,L	0.10	0.41	1.0	28.5	42.7	14	194	-	0.25	118	Y	2SP	NNR-5RFWR	
7	F,L	0.06	0.37	0.8	45.7	68.5	14	194	-	0.25	118	Y	2SP	NNT-8EFWE	
7	F,L	0.05	0.32	1.25	28.5	42.7	14	150	-	0.25	78	X	2SP	NVT-251	
3	F,T,L	0.07	0.24	1.0	28.5	42.7	14	158	-	0.25	118	Y	2SP	NVT-287	
#	L	0.110	0.660	1.5	-	100	10	160	180	0.25	60	#125	-	PM100RCOS-W	
#	L	0.085	0.400	1.5	-	60	10	175	250	0.20	72	#125	-	PM403FBS-BR	
#	L	0.110	0.500	2.5	-	90	10	175	250	0.20	72	#125	-	PM405FBS-BR	
#	L,F	0.280	0.900	3.0	-	110	10	175	250	0.20	72	#125	-	PMKLNGBR	
#	L	0.155	0.840	2.5	-	110	10	160	180	0.25	72	#125	-	PMRT-W	
#	L	0.106	0.710	2.0	-	32	20	175	250	0.40	72	1A	7	R2TW-W	
#	L	0.137	0.920	2.5	-	48	20	175	250	0.40	72	1	15	R3TW-W	
#	L	0.069	0.500	2.0	-	105	20	175	250	0.30	60	1D	1	R3TEF-W	
#	L	0.106	0.660	2.5	-	105	-60	300	300	0.40	72	1	7	R3BUT-W	
1	F	0.069	0.120	NB	-	15	-60	225	275	0.20	60	-	-	CM100FBS	
1	F	0.100	0.336	1.0	-	60	-60	225	275	0.20	60	-	-	CM200FBS	
#	L,S	0.094	0.340	1.0	-	50	-60	225	275	0.20	-	1A	1	SWC/2	
#	L,S	0.125	0.480	2.0	-	75	-60	225	275	0.20	-	1	7	SWC/3	
#	L,S	0.187	0.640	3.0	-	100	-60	225	275	0.20	-	3	20	SWC/4	
#	L,S	0.100	0.340	n.b	-	60	-60	225	275	0.20	-	1A	1	SWC/Fine Weave	
#	L,S	0.069	0.180	n.b	-	15	-60	225	275	0.20	-	25LL	0	SWC/104 Duck	
6	L,S	0.100	0.360	1.0	-	100	-60	310	350	0.20	-	1A	1	SWP/2 Ply Heat Set	
6	L,S	0.210	0.720	3.0	-	200	-60	310	350	0.20	-	3	20	SWP/4 Ply Heat Set	
#	F,L	0.100	0.360	1.0	-	90	10	175	250	0.20	72	#2P	-	UM80-W	

Explanations

- = applicable
- ◆ = pending
- = conditionally applicable
- = not applicable

CBS = cover both sides

COS = cover one side

drk green = dark green

FBS = friction both sides

impreg. = impregnated

lt. grey = light grey

n.b = nose bar

NBR = acrylo-nitrile-butadiene rubber

PA = polyamide

PES = polyester

PES/CO = polyester/cotton

PUR = polyurethane, cross-linked

PVC = polyvinylchloride

PVC adh. = polyvinylchloride adhesive

PVC s-adh. = polyvinylchloride super adhesive

RMP = rubber modified product

s. layer = smooth layer

SBR = styrene butadiene rubber

SI = silicone

TPE = thermoplastic elastomer

TPU = polyurethane, thermo-plastic

transp. = transparent

Class of chemical resistance

(1) Under extreme humidity/wet operating conditions admissible tensile only 158°F

(2) Without counter bend

(3) Running side class of chemical resistance: 6

= Reference NIBA Chemical Resistance Guide

Joining

T = Thermofix

F = Flexproof

L = Laced

W = Weld

Approved for Food Transport

F = FDA

E = EU Conformable

U = USDA

All data are approximate values under standard climatic conditions: 23°C/73°F and 50% relative humidity.



SPECIALTY CONVEYING

Product group	Belt type	PLY	For slider bed	For carrying roller	Permanently antistatic	Tension member, material	Conveying side, material	Conveying side, surface	Conveying side, color	Back side, material	Back side, surface
Economy	E-5EBBT	2	■	■	■	PES	TPU	blank	black	PES	fabric
	E-5EXBT	2	■	■	■	PES	TPU	blank	black	PES	fabric
Extraline	EAT-8P	2	■	■	■	PA	NBR	fine structure	black	PUR	impregnated
	EAB-3G	1	■	■	-	GI	SI	blank	white	SI	fabric
	ENB-8EL	2	■	■	■	PES	TPU	blank	black	PES	fabric
	ENI-5P	2	■	■	■	PA	PUR	impregnated	black	PUR	impregnated
	ENI-12P	2	■	■	■	PA	PUR	impregnated	black	PUR	impregnated
	ENI-10E	2	■	■	■	PES	TPU	impregnated	lt. grey	TPU	impregnated
	ENI-5AQ	1	■	■	-	AR	PTFE	blank	off-white	PTFE	blank
	ENI-5EE	2	■	■	■	PES	PUR	impregnated	black	PUR	impregnated
High Duty	HAB-12E	2	■	■	■	PES	NBR	blank	green	PUR	fabric
	HAG-12E	2	■	■	■	PES	NBR	rough top	green	PUR	impregnated
	HAL-12E	2	■	■	■	PES	EPDM	long. groove	green	PUR	impregnated
	HAR-12E	2	■	■	■	PES	NBR	rough structure	green	PES	fabric
	HAT-5E	2	■	■	■	PES	NBR	fine structure	green	TPU	impregnated
	HAT-8P	2	■	■	■	PA	NBR	fine structure	green	PUR	impregnated
	HAT-12P	2	■	■	■	PA	NBR	fine structure	green	PUR	impregnated
	HAT-18PW	3	■	■	■	PA	NBR	fine structure	lt. green	PUR	impregnated
	HAT-24PW	2	■	■	■	PA	NBR	fine structure	lt. green	PUR	impregnated
	HNA-8P	2	■	■	■	PA	PUR	blank	green	PUR	impregnated
	HNA-12E	2	■	■	■	PES	PUR	blank	green	PUR	impregnated
	HNA-18P	3	■	■	■	PA	PUR	blank	green	PUR	impregnated
	HNB-5E	2	■	■	■	PES	TPU	blank	green	TPU	impregnated
	HNB-8E	2	■	■	■	PES	TPU	blank	green	TPU	impregnated
	HNB-12E	2	■	■	■	PES	TPU	blank	green	TPU	impregnated
	HNU-8P	2	■	■	-	PA	PA	blank	green	PA	blank
	HSL-8E	2	■	■	■	PES	TPU	long. groove	drk grn	PES	impregnated
	SWC	SWC/LW	2	■	■	-	COTTON	COTTON	fabric	natural	COTTON
SWP	SWP/4 HS	4	■	■	-	PES	PES	fabric	white	PES	fabric
	SWP/6	6	■	■	-	PES	PES	fabric	white	PES	fabric

	Class of chemical resistance	Joining	Thickness [in.]	Mass of belt per square foot (belt weight) m _b [lbs./sq.ft.]	Pulley diameter, minimum [in.]	Tensile force for 1% elongation per unit of width k1% [lbs./in.]	Admissible tensile force per width k adm [lbs./in.]	Minimum Temperature [°F]	Maximum Temperature [°F]	Maximum Intermittent [°F]	Coefficient of friction μ of back side on steel	Manufacturing width [in.]	Clipper	Belt type
6	T,F,L		0.06	0.33	1.2	28.5	45.7	-22	176	230	0.2	94	X	E-5EBBT
6	F		0.05	0.27	0.32	29	46.0	-22	176		0.15	94	-	E-5EXBT
2	T,L		0.08	0.45	1.0	28.5	68.5	32	212	302	0.2	94	Y	EAT-8P
5	T		0.04	0.27	1.2	17.1	57.1	-40	446	482	0.5	55	-	EAB-3G
6			0.06	0.33	0.9	45.7	68.5	-4	176		0.2	94	1-DHT	ENB-8EL
2	T,L		0.04	0.24	0.8	28.5	91.4	-4	212	302	0.15	47	X	ENI-5P
2	T		0.06	0.35	2.4	68.5	211.3	-4	212	302	0.2	47	1-DHT	ENI-12P
6	T,F,L		0.06	0.33	1.57	57.1	91.4	14	140	176	0.2	157	X	ENI-10E
8	F		0.02	0.15	2.4	28.5	28.5	-22	482	482	0.09	106	X	ENI-5AQ
6	T,F,L		0.05	0.31	2.0	28.5	45.7	5	140	158	0.2	94	X	ENI-5EE
5	T,L		0.08	0.49	2.8	68.5	114.2	32	212	248	0.35	94	Y	HAB-12E
5	T,L		0.23	1.00	4.0	68.5	114.2	32	212	302	0.2	47	1-AHT	HAG-12E
4	T,L		0.1	0.47	2.4	68.5	114.2	-22	212	302	0.2	47	Y	HAL-12E
5	T,L		0.07	0.33	2.0	68.5	114.2	-4	212	302	0.2	47	Y	HAR-12E
6	F,T,L		0.06	0.37	1.0	28.5	45.7	32	176	230	0.15	47	X	HAT-5E
2	T,L		0.08	0.45	1.0	28.5	68.5	32	212	302	0.2	94	Y	HAT-8P
2	T,L		0.12	0.66	2.0	45.7	114.2	32	212	302	0.2	94	1-AHT	HAT-12P
2	T,L		0.15	0.82	2.4	45.7	114.2	32	212	302	0.2	94	2SPHT	HAT-18PW
2	T		0.24	1.39	3.5	68.5	171.3	32	212	302	0.2	94	4HT	HAT-24PW
2	T,L		0.05	0.23	1.0	28.5	68.5	-4	212	302	0.2	94	X	HNA-8P
5	T,L		0.04	0.27	2.4	68.5	114.2	32	212	248	0.2	94	X	HNA-12E
2	T,L		0.07	0.39	2.0	68.5	171.3	-4	212	302	0.2	94	1-DHT	HNA-18P
6	T,F,L		0.05	0.29	0.8	28.5	45.7	5	176	230	0.2	157	X	HNB-5E
6	T,F,L		0.06	0.37	1.0	45.7	74.2	5	176	230	0.2	157	Y	HNB-8E
6	T,F,L		0.10	0.53	2.4	68.5	114.2	5	176	230	0.2	157	1-AHT	HNB-12E
1	T,L		0.04	0.20	2.0	28.5	68.5	-4	212	302	0.2	47	Y	HNU-8P
6	T,F,L		0.07	0.41	0.8	46.0	74.0	-22	176	230	0.15	94	Y	HSL-8E
#	L,S		0.06	0.22	1	-	45	-60	225	275	0.2	CALL	25	SWC/LW
#	L,S		0.195	0.060	3.0	-	200	-60	310	350	0.2	84	3	SWP/4
#	L,S		0.260	0.085	6.0	-	300	-60	310	350	0.2	50	45	SWP/6

Explanations

- = applicable
- ◆ = pending
- = conditionally applicable
- = not applicable

AR = aramid

CBS = cover both sides

COS = cover one side

FBS = friction both sides

NBR = acrylo-nitrile-butadiene rubber

PES = polyester

PTFE = teflon

PUR = polyurethane, cross-linked

PVC = polyvinylchloride

PVC adh. = polyvinylchloride adhesive

PVC s-adh. = polyvinylchloride super adhesive

RMP = rubber modified product

SBR = styrene butadiene rubber

TPE = thermoplastic elastomer

TPU = polyurethane, thermo-plastic

Class of chemical resistance

= Reference NIBA Chemical Resistance Guide

Joining

T = Thermofix

F = Flexproof

L = Laced

S = Stitched

WT = Woven endless

PS = Pin Seam

Minimum Pulley Diameter

* = Depends on type of joint

All data are approximate values under standard climatic conditions: 23°C/73°F and 50% relative humidity.

D

Product group

Belt/tape type

For slider bed

For carrying roller

Permanently antistatic

Tension member, material

Conveying side, material

Conveying side, surface

Conveying side, color

Back side, material

Back side, surface

Back side, color

FOLDER/GLUER BELTS

Product group	Belt/tape type	For slider bed	For carrying roller	Permanently antistatic	Tension member, material	Conveying side, material	Conveying side, surface	Conveying side, color	Back side, material	Back side, surface	Back side, color
Flexfold	CM-14/30F	-	■	■	PES	NBR	rough struct.	drk green	NBR	rough structure	drk green
	CM-14/40F	-	■	■	PES	NBR	rough struct.	drk green	NBR	rough structure	drk green
	CM-14/50F	-	■	■	PES	NBR	rough struct.	drk green	NBR	rough structure	drk green
	CM-18/30F	-	■	■	PES	NBR	rough struct.	drk green	NBR	rough structure	drk green
PA Series	S-10/30	-	■	■	PA	NBR	rough struct.	drk green	NBR	rough structure	drk green
	S-10/40	-	■	■	PA	NBR	rough struct.	drk green	NBR	rough structure	drk green
	S-10/50	-	■	■	PA	NBR	rough struct.	drk green	NBR	rough structure	drk green
	S-18/60	-	■	■	PA	NBR	rough struct.	drk green	NBR	rough structure	drk green

MACHINE TAPES

Product group	Belt/tape type	For slider bed	For carrying roller	Permanently antistatic	Tension member, material	Conveying side, material	Conveying side, surface	Conveying side, color	Back side, material	Back side, surface	Back side, color
Hamid Series	MAB-8E	-	■	■	PES	TPU	fine structure	drk green	TPU	fine structure	drk green
	MAM-04H	■	■	■	H	NBR	fine structure	green	NBR	rough structure	black
	MAM-05HP	-	■	■	H	NBR	fine structure	green	NBR	rough structure	black
	MAM-5E	-	■	■	PES	NBR	fine structure	green	NBR	fine structure	black
	MAM-5P	■	■	■	PA	NBR	fine structure	green	H	blank	black
	MAM-8P	■	■	■	PA	NBR	fine structure	green	H	blank	black
	MAN-05H	-	■	■	H	PES	fleece	drk grey	NBR	rough struct.	black
	MAT-02H	-	■	■	H	NBR	rough structure	green	NBR	rough struct.	black
	MAT-5P	■	■	■	PA	EPDM	rough structure	green	H	blank	black
	MNN-10E	-	■	■	PES	PES/PP	fleece	grey	NBR	rough structure	black
	MNT-5P	■	■	■	PA	PUR	coated fabric	black	PUR	coated fabric	black
	MNT-8P	■	■	■	PA	PA	fabric	lt grey	PA	fabric	lt grey
	MVT-6P	■	■	■	PA	PUR	coated fabric	black	NBR	fine struct.	green
	XVT-2158	■	■	■	PA	NBR	impregnated	green	NBR	impregnated	green
PA Series	A-1	■	■	■	PA	NBR	matte	green	NBR	blank	black
	F-0	■	■	■	PA	NBR	matte	green	NBR	impregnated	green
	F-1	■	■	■	PA	NBR	structured	green	NBR	impregnated	green
	HAM-5P	■	■	■	PA	NBR	matte	green	NBR	impregnated	black
	HAT-8P	■	■	■	PA	NBR	structured	green	NBR	impregnated	black
	HAT-12P	■	■	■	PA	NBR	structured	green	NBR	impregnated	black
	HNI-5PE	■	■	■	PA	PA	fabric	green	PUR	impregnated	black
	HNU-8P	■	■	■	PA	PA	blank	green	PA	blank	green
	TS-55	■	■	-	PA	NBR	matte	green	PA/CO	fabric	yellow
PES Series	HAT-5E (xVT-1895)	■	■	■	PES	NBR	fine structure	green	TPU	impregnated	lt grey
	W-8	■	■	■	PES/CO	TPU	blank	black	PES/CO	impregnated	green
	W-16	■	■	■	PES/CO	TPU	blank	black	PES/CO	impregnated	green
SWC	SWC/6	■	■	-	COTTON	COTTON	texture	natural	COTTON	texture	natural
	SWC/PT	■	■	-	COTTON	COTTON	texture	natural	COTTON	texture	natural
VARIOUS CONVERTING											
Rubber	R3CNRT-BE	■	■	-	PES	NITRILE	rougtop	blue	PES	impregnated	black
	RDGRP-R	■	■	-	PES	NATURAL RUBBER	blank	red	PES	impregnated	black
	R3URT-OE	■	■	-	PES	NITRILE	rougtop	orange	PES	impregnated	black
High Duty	HAG-12E	■	■	■	PES	NBR	rougtop	green	PUR	impregnated	black
	HAR-12E	■	■	■	PES	NBR	rough struct.	green	PES	fabric	white
	HAT-18PW	■	■	■	PA	NBR	fine structure	green	PUR	impregnated	black
	HAT-24PW	■	■	■	PA	NBR	fine structure	green	PUR	impregnated	black
Standard & N-Line	NAB-18EEAV (NVT-131)	■	■	■	PES	PVC adh.	blank	drk grey	PES	fabric	white
	NSB-12HAV (G12/3BSA7)	■	■	-	PES	PVC S-adh	blank	drk grey	PES	fabric	white
	SAG-12E	■	■	■	PES	EPDM	rougtop	drk grey	PES	fabric	white
	SAG-8E	■	■	■	PES	PVC	mini rougtop	drk grey	PES	fabric	white

	Class of chemical resistance	Joining	Thickness [in.]	Mass of belt per square foot (belt weight) m _b [lbs./sq.ft.]	Pulley diameter, minimum [in.]	Tensile force for 1% elongation per unit of width k1% [lbs./in.]	Admissible tensile force per width k adm [lbs./in.]	Minimum Temperature [°F]	Maximum Temperature [°F]	Maximum Intermittent [°F]	Coefficient of friction μ of back side on steel	Manufacturing width [in.]	Belt type
2	F	0.12	0.76	1.2	39.9	-	-4	149	176	0.7	47	CM-14/30F	
2	F	0.16	0.98	1.6	39.9	-	-4	149	176	0.7	47	CM-14/40F	
2	F	0.20	1.17	2.0	39.9	-	-4	149	176	0.7	47	CM-14/50F	
2	F	0.13	0.66	2.4	86	-	-4	149	176	0.7	47	CM-18/30F	
2	T	0.12	0.76	1.2	31.4	45.7	32	212	300	0.7	47	S-10/30	
2	T	0.16	0.98	1.6	31.4	45.7	32	212	300	0.7	47	S-10/40	
2	T	0.20	1.17	2.0	31.4	45.7	32	212	300	0.7	47	S-10/50	
2	T	0.24	1.41	2.4	48.5	91.4	32	212	300	0.7	47	S-18/60	
6	F	0.05	0.30	1.0	45.7	74.3	-4	140	176	0.6	47	MAB-8E	
2	Q,F,T	0.06	0.29	0.6	13.7*	17.1	-22	140	176	0.4	47	MAM-04H	
2	Q,F,T	0.06	0.33	0.6	20.0*	28.5	-4	140	176	0.7	47	MAM-05HP	
2	F	0.06	0.29	1.0	28.5	45.7	-4	140	176	0.4	47	MAM-5E	
2	Q,F,T	0.05	0.25	0.8	28.5	71.4	-4	140	176	0.2	47	MAM-5P	
2	F	0.07	0.36	1.2	45.7	91.4	-4	140	176	0.2	47	MAM-8P	
2	Q,F,T	0.07	0.38	0.8	28.5*	28.5	-22	140	176	0.7	47	MAN-05H	
2	Q,F,T	0.06	0.29	0.6	5.1*	8.6	-22	140	176	0.7	47	MAT-02H	
2	Q,F,T	0.06	0.31	0.8	28.5	71.4	-4	140	176	0.2	47	MAT-5P	
6	F	0.07	0.39	1.0	57.1	68.5	-4	140	176	0.7	47	MNN-10E	
2	F	0.04	0.24	0.8	34.3	91.4	-4	140	176	0.2	47	MNT-5P	
2	F	0.07	0.31	1.0	45.7	114.2	-4	212	300	0.25	47	MNT-8P	
2	F	0.06	0.33	0.8	34.0	91.0	-4	140	176	0.6	47	MVT-6P	
2	T	0.04	0.23	1.0	22.0	46.0	-4	212	300	0.2	47	XVT-2158	
2	T,L	0.05	0.26	1.0	22.3	57.1	-4	212	302	0.15	47	A-1	
2	T,L	0.03	0.15	0.6	11.4	28.4	-4	212	302	0.15	47	F-0	
2	T,L	0.05	0.25	1.0	25.7	45.7	-4	212	302	0.15	47	F-1	
2	T,L	0.04	0.18	0.6	17.1	45.7	-4	212	302	0.15	47	HAM-5P	
2	T,L	0.08	0.45	1.0	28.5	68.5	32	212	302	0.15	94	HAT-8P	
2	T,L	0.12	0.66	2.0	45.7	114.2	32	212	302	0.15	94	HAT-12P	
2	T,L	0.04	0.14	0.6	17.1	45.7	-22	212	302	0.15	47	HNI-5PE	
1	T,L	0.04	0.20	2.0	28.5	68.5	-4	212	302	0.15	47	HNU-8P	
2	T,L	0.03	0.16	0.6	14.3	37.1	-4	212	356	0.25	47	TS-55	
6	F,T,L	0.06	0.37	1.0	28.5	45.7	32	176	230	0.15	47	HAT-5E (XVT-1895)	
6	F,T,L	0.02	0.14	0.6	20.0	20.0	-4	140	176	0.15	47	W-8	
6	F,T,L	0.03	0.18	0.6	40.0	40.0	-4	140	176	0.15	47	W-16	
6	L,S	0.25	0.84	0.6	-	145.0	-60	225	275	0.2	CALL	SWC/6	
6	L,S	0.04	0.12	1.0	-	30.0	-60	225	275	0.2	CALL	SWC/PT	
5	L	0.2	0.12	2.5	-	150.0	0	200	250	0.3	72	R3CNRT-BE	
#	L	0.23	0.104	3.0	-	150.0	-20	175	225	0.3	72	RDGRP-R	
5	L	0.28	0.094	2.0	-	135.0	0	200	250	0.3	72	R3URT-OE	
5	T,L	0.23	1.0	4.0	68.5	114.2	32	212	302	0.15	47	HAG-12E	
5	T,L	0.07	0.33	2.0	68.5	114.2	32	212	302	0.2	47	HAR-12E	
2	T,L	0.15	0.82	2.4	45.7	114.2	32	212	302	0.15	94	HAT-18PW	
2	T,L	0.24	1.39	3.5	137	171.3	32	212	302	0.15	94	HAT-24PW	
3	F,L	0.19	1.15	4.7	103	154.2	14	176	212	0.2	118	NAB-18EEAV (NVT-131)	
3	F,L	0.18	1.15	2.8	69	102.8	14	158	212	0.2	118	NSB-12HAV (G12/3BSA7)	
4	T,L	0.20	0.86	3.1	68.5	114.2	-22	212	302	0.2	47	SAG-12E	
3	F,L,T	0.16	0.82	2.0	45.7	68.5	14	140	212	0.2	94	SAG-8E	

Explanations

- = applicable
- = conditionally applicable
- = not applicable

CO = cotton

EDPM = Ethylene-Propylene Terpolymer

H = Hamid

NBR = acrylo-nitrile-butadiene rubber

PES = polyester

PUR = polyurethane, cross-linked

PVC = polyvinylchloride

PVC adh. = polyvinylchloride adhesive

PVC s-adh. = polyvinylchloride super adhesive

RMP = rubber modified product

SBR = styrene butadiene rubber

TPE = thermoplastic elastomer

TPU = polyurethane, thermo-plastic

Joining

- T = Thermofix
- F = Flexproof
- L = Laced
- Q = Quickmelt
- S = Stitched

Tensile Force

* = K8% (tensile force for 8% elongation)

Class of chemical resistance

= Reference NIBA Chemical Resistance Guide

All data are approximate values under standard climatic conditions: 23°C/73°F and 50% relative humidity.

Product group

Belt type

PLY

For slider bed

For carrying roller

Permanently antistatic

Tension member, material

Conveying side, material

Conveying side, surface

Conveying side, color

Back side, material

Back side, surface

Extraline	EMB-12EMCH	2	■	■	■	PES	TPU	mat	cobalt blue	PES	impreg.
	ENA-151AEBH	3	■	■	■	Aramid	PUR	blank	black	TPU	impreg.
	ENI-10E	2	■	■	■	PES	TPU	impreg.	lt. grey	TPU	impreg.
	ENR-12E	1	■	■	■	PES	PES	fabric	blue	PES	fabric
	ENT-12E	1	■	■	■	PES	PES	fabric	white	PES	fabric
	ENU-50A	3	■	■	■	Aramid	TPU	blank	black	TPU	impreg.
High Duty	HAG-12E	2	■	■	■	PES	NBR	rough struct.	green	PUR	impreg.
	HAT-8P	2	■	■	■	PA	NBR	rough struct.	green	PUR	impreg.
	HAT-12P	2	■	■	■	PA	NBR	rough struct.	green	PUR	impreg.
	HAT-18PW	3	■	■	■	PA	NBR	rough struct.	lt. green	PUR	impreg.
	HAT-24PW	2	■	■	■	PA	NBR	rough struct.	lt. green	PUR	impreg.
N-Line	NAB-8EXDV	2	■	■	-	PES	PVC-adh.	blank	dark green	PES	fabric
	NAB-12EXDV	2	■	■	-	PES	PVC-adh.	blank	dark green	PES	fabric
	NAB-18EEAV (NVT-131)	3	■	■	■	PES	PVC-adh.	blank	dark grey	PES	fabric
	NAJ-8EXDV	2	■	■	-	PES	PVC	sine wave	dark green	PES	fabric
F-Types	FNI-5E	2	■	■	■	PES	TPU	impreg.	white	TPU	impreg.
	FNI-12E	2	■	■	■	PES	TPU	impreg.	lt. grey	TPU	impreg.
	F-8EXWT	2	■	■	■	PES	TPU	impreg.	white	TPU	impreg.
Standard	SAB-8E	2	■	■	■	PES	PVC	blank	anthracite	PES	fabric
	SAB-18E	2	-	■	■	PES	PVC	blank	anthracite	PVC	waffle
	SNB-12E	2	■	■	■	PES	PVC	blank	anthracite	PES	fabric
Allveyor	A150COS-B	-	■	■	-	PES	PVC	blank	black	PVC	impreg.
	A120COS-B	-	■	■	-	PES	PVC	blank	black	PVC	impreg.
Rubber	R2-160RTXB-GP	2	■	■	-	PES	SBR	rougtop	black	PES	friction
	R3SBRRT-B	3	■	■	-	PES	SBR	rougtop	black	PES	friction
	R3CNRT-BE	3	■	■	-	PES	NITRILE	rougtop	blue	PES	impreg.
Polymate	PMKLNGBR	-	■	■	-	PES	NITRILE	rougtop	brown	NITRILE	impreg.
Ulti-Mate	UM80SC-B	-	■	■	■	PES	NITRILE	buffed	black	NITRILE	buffed
	UM140SC-B	-	■	■	■	PES	NITRILE	buffed	black	NITRILE	buffed
	UM240-G	-	■	■	■	PES	NITRILE	buffed	green	NITRILE	buffed
	UM240PU-G	-	■	■	-	PES	PU	blank	green	NITRILE	buffed
Transmission	A-4	-	-	-	■	PA	NBR	blank	green	NBR	long-groove
	A-5	-	-	-	■	PA	NBR	blank	green	NBR	long-groove

	Class of chemical resistance	Joining	Thickness [in.]	Mass of belt per square foot (belt weight) m _b [lbs./sq.ft.]	Pulley diameter, minimum [in.]	Tensile force for 1% elongation per unit of width k ₁ % [lbs./in.]	Admissible tensile force per width k _{adm} [lbs./in.]	Minimum Temperature [°F]	Maximum Temperature [°F]	Maximum Intermittent [°F]	Coefficient of friction μ of back side on steel	Manufacturing width [in.]	Belt type
6	F,L	0.06	0.35	1.60	68.5	114.2	-22	176	212	0.15	157	EMB-12EMCH	
6	F	0.15	0.82	9.80	-	822.0	-4	122	212	0.20	157	ENA-151AEBH	
6	F,T,L	0.06	0.33	1.60	69.0	91.4	14	140	212	0.15	157	ENI-10E	
6	F,L,S	0.07	0.26	3.15	69.0	103.0	-22	176		0.15	141	ENR-12E	
6	F,L,S	0.03	0.10	1.90	69.0	103.0	-22	176		0.15	141	ENT-12E	
6	F	0.09	0.51	3.15	285.5	285.5	5	158	176	0.15	157	ENU-50A	
5	T,L	0.23	1.00	4.00	68.5	114.2	32	212	302	0.15	47	HAG-12E	
5	T,L	0.08	0.45	1.00	40.0	69.0	32	212	302	0.15	94	HAT-8P	
5	T,L	0.12	0.66	2.00	57.0	114.0	32	212	302	0.15	94	HAT-12P	
2	T,L	0.15	0.82	2.40	51.0	114.2	32	212	302	0.15	94	HAT-18PW	
2	T,L	0.24	1.39	3.50	86.0	171.3	32	212	302	0.15	94	HAT-24PW	
3	F,L	0.08	0.47	1.60	45.7	68.5	14	158	212	0.15	118	NAB-8EXDV	
3	F,L	0.11	0.65	2.40	68.5	102.8	14	176	212	0.15	118	NAB-12EXDV	
3	F,L	0.19	1.15	4.70	103.0	154.2	14	176	212	0.15	118	NAB-18EEAV	
3	F,L	0.21	0.92	2.40	45.7	68.5	14	194	212	0.15	118	NAJ-8EXDV	
6	T,F,L	0.04	0.18	0.32	28.5	45.7	5	176	230	0.15	94	FNI-5E	
6	T,F,L	0.06	0.33	2.00	68.5	114.2	-22	176	230	0.15	94	FNI-12E	
6	T,F,L	0.06	0.35	0.4	46.0	74.0	-22	176	230	0.15	94	F-8EXWT	
3	F,L,T	0.08	0.49	1.60	45.7	68.5	23	157	212	0.20	157	SAB-8E	
3	F,L,T	0.15	0.98	4.00	126.0	166.0	23	176		0.50	94	SAB-18E	
3	F,L,T	0.10	0.57	3.10	91.0	114.0	23	176		0.15	157	SNB-12E	
3	L,F	0.17	1.08	4.0	-	150	-10	180	180	0.35	72	A150COS-B	
3	L,F	0.135	0.07	3.0	-	120	-10	180	180	0.35	72	A120COS-B	
#	L,T	0.32	1.10	3.0	-	150	-20	180	250	0.25	72	R2-160RTXB-GP	
#	L,T	0.32	1.42	4.0	-	175	-20	180	250	0.25	72	R3SBRRT-B	
5	L,T	0.20	1.26	2.5	-	150	0	200	250	0.30	72	R3CNRT-BE	
#	L,F	0.28	0.90	3.0	-	110	10	175	250	0.20	72	PMKLN-G-BR	
#	L,F	0.10	0.43	1.0	-	90	10	175	250	0.25	72	UM80SC-B	
#	L,F	0.14	0.48	2.0	-	135	10	175	250	0.25	72	UM140SC-B	
#	L,F	0.22	0.84	5.0	-	135	10	175	250	0.25	72	UM240-G	
#	L,F	0.31	1.08	5.0	-	135	10	175	250	0.25	72	UM240PU-G	
2	T	0.20	1.09	9.4	129	302	-4	212	302	0.20	47	A-4	
2	T	0.27	1.47	13.4	187	513	-4	212	302	0.20	47	A-5	

Explanations

- = applicable
- = conditionally applicable
- = not applicable

CBS = cover both sides

COS = cover one side

FBS = friction both sides

impreg. = impregnated

NBR = acrylo-nitrile-butadiene rubber

PA = polyamide

PES = polyester

PET = polyethyleneterephthalate

PU = thermoset polyurethane

PUR = polyurethane, cross-linked

PVC = polyvinylchloride

PVC adh. = polyvinylchloride adhesive

PVC s-adh. = polyvinylchloride super adhesive

RMP = rubber modified product

SBR = styrene butadiene rubber

TPE = thermoplastic elastomer

TPU = polyurethane, thermoplastic

Joining

T = Thermofix

F = Flexproof

L = Laced

WJ = Woven Joint

Class of chemical resistance

= Reference NIBA Chemical Resistance Guide

All data are approximate values under standard climatic conditions: 23°C/73°F and 50% relative humidity.



Product group	Belt type	PLY	For slider bed	For carrying roller	Permanently antistatic	Tension member, material	Conveying side, material	Conveying side, surface	Conveying side, color	Back side, material	Back side, surface
F-Types	FAB-12E	2	■	■	■	PES	TPU	blank	white	TPU	impregnated
	FNI-5E	2	■	■	■	PES	TPU	impregnated	white	TPU	impregnated
Polymate	PMTEF-BE	-	■	■	-	PES	TEFLON	blank	blue	NITRILE	buffed
	PMKLNGBR	-	■	■	-	PES	NITRILE	rough top	brown	NITRILE	friction
Ulti-Mate	UM80SC-B	-	■	■	■	PES	NITRILE	buffed	black	NITRILE	buffed
	UM140SC-B	-	■	■	■	PES	NITRILE	buffed	black	NITRILE	buffed
	UM140SCTPU-B	-	■	■	■	PES	TPU	blank	black	NITRILE	buffed
	UM240PU-G	-	■	■	-	PES	PUR	blank	green	NITRILE	buffed
	UM240-G	-	■	■	-	PES	NITRILE	buffed	green	NITRILE	buffed
	UM240SC-B	-	■	■	■	PES	NITRILE	buffed	black	NITRILE	buffed
High Duty & Extraline	E-16EHMU (xvt-2092)	2	■	■	■	PES	PUR	impregnated	grey	PUR	impregnated
	ENI-10E	2	■	■	■	PES	TPU	impregnated	light grey	TPU	impregnated
	HAT-12P	2	■	■	■	PA	NBR	rough structure	green	PUR	impregnated
	HAT-18PW	3	■	■	■	PA	NBR	rough structure	light green	PUR	impregnated
	HAT-24PW	3	■	■	■	PA	NBR	rough textile	light green	PUR	impregnated
	HNB-12E	2	■	■	■	PES	TPU	blank	green	TPU	impregnated
	XVT-2249	1	■	■	-	PA	PA	impregnated	black	PA	impregnated
N-Line	NHU-8EAAV	2	■	■	-	PES	PVC	blank	anthracite	TPU	impregnated
	NHU-12EAAV	3	■	■	-	PES	PVC	blank	anthracite	TPU	impregnated
	NNT-12ECDV	2	■	■	■	PES	PVC	skim	dark green	TPU	impregnated
	NNT-20ECDV	3	■	■	■	PES	PVC	skim	dark green	TPU	impregnated
Allveyor	A150COS-B	-	■	■	-	PES	PVC	blank	black	PVC	impregnated
	A150CBSMI-B	-	-	■	-	PES	PVC	blank	black	PVC	blank
	A200COS-B	-	■	■	-	PES	PVC	blank	black	PVC	impregnated
	A200CBS-B	-	-	■	-	PES	PVC	blank	black	PVC	blank
	A120HLTP-B	-	■	■	-	PES	PVC	rougtop	black	PVC	impregnated
Rubber	R3CNRT-BE	3	■	■	-	PES	NITRILE	rougtop	blue	PES	impregnated

	Class of chemical resistance	Joining	Thickness [in.]	Mass of belt per square foot (belt weight) m _b [lbs./sq.ft.]	Pulley diameter, minimum [in.]	Tensile force for 1% elongation per unit of width k1% [lbs./in.]	Admissible tensile force per width k adm [lbs./in.]	Minimum Temperature [°F]	Maximum Continuous [°F]	Maximum Intermittent [°F]	Coefficient of friction μ on steel	Manufacturing width [in.]	Clipper	Alligator	Belt type
6	F,L,T		0.10	0.53	2.4	68.5	114.2	-22	176	230	0.15	157	Z	-	FAB-12E
6	F,L,T		0.04	0.18	0.6	29.0	46	5	176	230	0.15	157	-	-	FNI-5E
#	L		0.115	0.06	6.0	-	110	20	175	250	0.20	34	1A	-	PMTEF-BE
#	L,F		0.28	0.40	3.0	-	110	10	175	250	0.20	72	5	-	PMKLNGBR
#	L,F		0.10	0.36	1.0	-	90	10	175	250	0.25	72	#62	1	UM80SC-B
#	L,F,T		0.14	0.48	2.0	-	135	10	175	250	0.25	72	#125	7	UM140SC-B
#	HF,F,L		0.20	0.91	4.0	-	140	10	175	-	0.25	72	3	25	UM140SCTPU-B
#	L,F		0.31	1.08	5.0	-	135	10	175	250	0.25	72	5	35	UM240PU-G
#	L,F		0.22	0.84	5.0	-	135	10	175	250	0.25	72	#187	25	UM240-G
#	L,F		0.22	0.84	5.0	-	135	10	175	250	0.25	72	#187	25	UM240SC-B
6	F,L,T		0.06	0.33	2.0	114.0	183	5	176	-	0.20	94	-	-	E-16EHMU
6	F,L,T		0.06	0.33	1.57	57.1	91.4	14	140	176	0.15	157	X	-	ENI-10E
2	L,T		0.12	0.66	2.00	45.7	114.2	35	212	302	0.15	94	1-AHT	-	HAT-12P
2	L,T		0.15	0.82	2.40	45.7	114.2	35	212	302	0.15	94	2SPHT	-	HAT-18PW
2	L,T		0.24	1.39	3.50	68.5	171.3	35	212	302	0.15	94	4HT	-	HAT-24PW
6	F,L,T		0.10	0.53	2.40	68.5	114.2	5	176	230	0.15	157	1-AHT	-	HNB-12E
3	T		0.15	0.75	11.8	160	-	-4	212	230	0.20	94	-	-	XVT-2249
3	F		0.08	0.47	2.0	46	74	32	176	-	0.15	118	-	-	NHU-8EAAV
2	F		0.12	0.78	4.0	69	103	32	176	-	0.15	118	-	-	NHU-12EAAV
3	F,L		0.09	0.57	3.2	68.5	102.8	32	176	212	0.1	98	39LLSP	-	NNT-12ECDV
3	F,L		0.14	0.82	3.4	114	171.3	32	176	212	0.15	98	36LL	-	NNT-20ECDV
3	F,L		0.17	1.08	4.0	-	150	-10	180	180	0.35	72	2	20	A150COS-B
3	F,L		0.20	1.20	3.5	-	150	-10	180	180	0.90	72	2	20	A150CBSMI-B
3	F,L		0.22	1.26	6.0	-	200	-10	180	180	0.35	72	4	27	A200COS-B
3	F,L		0.24	1.44	6.0	-	200	-10	180	180	0.90	72	4	27	A200CBS-B
3	F,L		0.37	1.08	4.0	-	120	-10	180	180	0.35	72	1	7	A120HLTP-B
5	L		0.20	1.26	2.5	-	150	0	200	250	0.30	72	5	27	R3CNRT-BE

Explanations

- = applicable
- = conditionally applicable
- = not applicable

CBS = cover both sides

COS = cover one side

FBS = friction both sides

NBR = acrylo-nitrile-butadiene rubber

PES = polyester

PU = thermoset polyurethane

PUR = polyurethane, cross-linked

PVC = polyvinylchloride

PVC adh. = polyvinylchloride adhesive

PVC s-adh. = polyvinylchloride super adhesive

RMP = rubber modified product

SBR = styrene butadiene rubber

TPE = thermoplastic elastomer

TPU = polyurethane, thermoplastic

Class of chemical resistance

= Reference NIBA Chemical Resistance Guide

Joining

- T = Thermofix
- F = Flexproof
- L = Laced
- HF = Hidden Finger

All data are approximate values under standard climatic conditions: 23°C/73°F and 50% relative humidity.

	Product group	Belt/tape type	For slider bed	For carrying roller	Permanently antistatic	Tension member, material	Conveying side, material, on top side	Conveying side, surface, on top side	Conveying side, color, on top side	Special smooth printing surface	Back-side, material, on pulley side	Back-side, surface, on pulley side	Back-side, color, on pulley side
Extraline	ENU-20E	■ ■ ■	PES	TPU	blank	black	■	PES	impreg.	grey			
Print	ENU-20EL	■ ■ ■	PES	TPU	blank	black	■	PES	impreg.	grey			
Blankets	ENU-50A	■ ■ ■	ARA	TPU	blank	black	■	PES	impreg.	grey			
Extraline													
Crosslapper	ENA-4EE	■ ■ ■	PES	PUR	blank	black	■	TPU	impreg.	grey			
Aprons	ENA-8EE	■ ■ ■	PES	PUR	blank	black	■	TPU	impreg.	black			
S-Series	S-140 H	- - ■	PA	NBR	fine structure	green	-	NBR	rough	yellow			
Tangential	S-141 H	- - ■	PA	NBR	fine structure	green	-	NBR	rough	yellow			
Belts	S-250 H	- - ■	PA	NBR	fine structure	green	-	NBR	rough	yellow			
	S-250 HR	- - ■	PA	NBR	rough	green	-	NBR	rough	yellow			
	S-251 H	- - ■	PA	NBR	rough	green	-	NBR	rough	yellow			
	S-321 H	- - ■	PA	NBR	rough	green	-	NBR	rough	yellow			
	S-390 H	- - ■	PA	NBR	rough	green	-	NBR	rough	yellow			
S-391 H	- - ■	PA	NBR	rough	green	-	NBR	rough	yellow				
TC Series	TC-20EF	- - ■	PET	NBR	fine structure	lt. green	-	NBR	rough	black			
	TC-35ER	- - ■	PET	NBR	rough	lt. green	-	NBR	rough	black			
	TC-55ER	- - ■	PET	NBR	rough	lt. green	-	NBR	rough	black			
Armid series	TF-22	- - ■	ARA	NBR	fine structure	green	-	NBR	fabric imp.	black			
Tangential	TF-33	- - ■	ARA	NBR	fine structure	green	-	NBR	fabric imp.	black			
Belts	TF-50	- - ■	ARA	NBR	fine structure	green	-	NBR	fabric imp.	black			
Spindle tapes	W-8	- - ■	PES	PES/CO	fabric	green	-	TPU	smooth	black			
	W-16	- - ■	PES	PES/CO	fabric	green	-	TPU	smooth	black			
	TS-5	- - ■	PA	NBR	rough	green	-	PA	fabric	yellow			
	TS-55	- - ■	PA	NBR	rough	green	-	PA	fabric	yellow			
	TS-10	- - -	PA	PA	fabric	green	-	PA	fabric	yellow			

	Class of chemical resistance	Joining	Thickness [in.]	Mass of belt per square foot (belt weight) m _b [lbs./sq.ft.]	Pulley diameter, minimum [in.]	Tensile force for 1% elongation per unit of width k1% [lbs./in.]	Admissible tensile force per width k adm [lbs./in.]	Minimum Temperature [°F]	Maximum Continuous [°F]	Maximum Intermittent [°F]	Manufacturing width [in.]	Belt type
6	F	0.08	0.47	3.15	114.2	91.4	+5	158	176	157	ENU-20E	
6	F	0.10	0.57	4.0	114.2	91.4	+5	158	176	157	ENU-20EL	
6	F	0.08	0.47	3.15	114.2	91.4	-22	122	176	157	EAU-20EV	
6	T,F	0.03	0.15	0.8	23.0	34.2	+15	158	176	157	ENA-4EE	
6	T,F	0.04	0.20	1.2	57	69	+15	158	176	157	ENA-8EE	
2	T	0.07	0.37	1.0	34.3	79.9	-4	212	302	47	S-140 H	
2	T	0.09	0.49	1.0	34.3	79.9	-4	212	302	47	S-141 H	
2	T	0.09	0.47	2.4	62.8	142.7	-4	212	302	47	S-250 H	
2	T	0.09	0.33	2.4	62.8	142.7	-4	212	302	47	S-250 HR	
2	T	0.12	0.68	2.4	62.8	142.7	-4	212	302	47	S-251 H	
2	T	0.13	0.70	4.0	79.9	182.7	-4	212	302	47	S-321 H	
2	T	0.13	0.70	4.7	97.1	222.7	-4	212	302	47	S-390 H	
2	T	0.16	0.92	4.7	97.1	222.7	-4	212	302	47	S-391 H	
2	F	0.08	0.45	1.0	57	114	-4	158	176	43	TC-20EF	
2	F	0.09	0.60	2.0	96	199.9	-4	158	176	43	TC-35ER	
2	F	0.12	0.60	2.8	148	314	-4	158	176	43	TC-55ER	
2	F	0.09	0.53	2.5	125.6	125.6	-4	149	176	47	TF-22	
2	F	0.12	0.66	3.5	188.4	188.4	-4	149	176	47	TF-33	
2	F	0.15	0.86	5.5	285.5	285.5	-4	149	176	47	TF-50	
6	F	0.02	0.14	0.6	20.0	20	-4	140	176	47	W-8	
6	F	0.03	0.18	0.6	40.0	40	-4	140	176	47	W-16	
2	T	0.02	0.09	0.6	7.4	20	-4	212	356	47	TS-5	
2	T	0.03	0.16	0.6	14.3	37.1	-4	212	356	47	TS-55	
1	T	0.03	0.14	0.6	17.1	28.5	-4	212	302	47	TS-10	

Explanations

- = applicable
- = conditionally applicable
- = not applicable
- ARA = aramide
- drk. grn = dark green
- drk grey = dark grey
- NBR = acrylo-nitrile-butadiene rubber
- PA/CO = polyamide/cotton
- PES = polyester
- PUR = polyurethane, cross-linked
- TPU = polyurethane, thermo-plastic

Joining

- T = Thermofix
- F = Flexproof

All data are approximate values under standard climatic conditions: 23°C/73°F and 50% relative humidity.



	Product group	Belt/tape type	Permanently antistatic	Tension member, material	Top side, material	Top side, surface	Top side, color	Pulley side, material	Pulley side, surface	Pulley side, color
A-Series	A-2	■	PA	NBR	blank	green	NBR	long-groove	black	
	A-3	■	PA	NBR	blank	green	NBR	long-groove	black	
	A-4	■	PA	NBR	blank	green	NBR	long-groove	black	
	A-5	■	PA	NBR	blank	green	NBR	long-groove	black	
Leather Series	A-3LL	■	PA	LEATHER	leather	light grey	LEATHER	leather	light grey	
	A-3LT	■	PA	PA	fabric	green	LEATHER	leather	light grey	
	A-4LL	■	PA	LEATHER	leather	light grey	LEATHER	leather	light grey	
	A-4LT	■	PA	PA	fabric	green	LEATHER	leather	light grey	
F-Series	F-2	■	PA	NBR	fabric impreg.	green	NBR	rough struct.	green	
S-Series	S-10/15 (S-1)	■	PA	NBR	rough struct.	lt. green	NBR	rough struct.	yellow	
	S-18/20 (S-2)	■	PA	NBR	rough struct.	lt. green	NBR	rough struct.	yellow	
	S-18/30 (S-3)	■	PA	NBR	rough struct.	lt. green	NBR	rough struct.	yellow	
	S-33/40 (S-4)	■	PA	NBR	rough struct.	lt. green	NBR	rough struct.	yellow	
	S-33/50 (S-5)	■	PA	NBR	rough struct.	lt. green	NBR	rough struct.	yellow	
TC Series	TC-20EF	■	PET	NBR	fine structure	lt. green	NBR	rough	black	
	TC-35ER	■	PET	NBR	rough	lt. green	NBR	rough	black	
	TC-55ER	■	PET	NBR	rough	lt. green	NBR	rough	black	
	TCF-50H	■	PET	HAMID	fine struct.	white	HAMID	fine struct.	white	
TF Series	TF-10	■	AR	NBR	fine struct.	green	NBR	rough struct.	black	
	TF-15	■	AR	NBR	fine struct.	green	NBR	rough struct.	black	
	TF-15H	■	AR	HAMID	fine struct.	white	HAMID	fine struct.	white	
	TF-22	■	AR	NBR	fine struct.	green	NBR	rough struct.	black	
	TF-33	■	AR	NBR	fine struct.	green	NBR	rough struct.	black	
	TF-50	■	AR	NBR	fine struct.	green	NBR	rough struct.	black	
	TF-75TE (XVR-1912)	■	AR	PES	fabric	lt. grey	NBR	fine structure	black	
ROUND BELTS										
Habicord	HC-3	-	TPU	TPU	fine structure	translucent	TPU	fine structure	translucent	
	HC-4	-	TPU	TPU	fine structure	translucent	TPU	fine structure	translucent	
	HC-5	-	TPU	TPU	fine structure	translucent	TPU	fine structure	translucent	
	HC-6	-	TPU	TPU	fine structure	translucent	TPU	fine structure	translucent	
	HC-7	-	TPU	TPU	fine structure	translucent	TPU	fine structure	translucent	
	HC-8	-	TPU	TPU	fine structure	translucent	TPU	fine structure	translucent	
	HC-10	-	TPU	TPU	fine structure	translucent	TPU	fine structure	translucent	
	HC-12	-	TPU	TPU	fine structure	translucent	TPU	fine structure	translucent	
HC-15	-	TPU	TPU	fine structure	translucent	TPU	fine structure	translucent		
Polycord	R-2	-	TPU	TPU	rough struct.	green	TPU	rough struct.	green	
	R-3	-	TPU	TPU	rough struct.	green	TPU	rough struct.	green	
	R-4	-	TPU	TPU	rough struct.	green	TPU	rough struct.	green	
	R-5	-	TPU	TPU	rough struct.	green	TPU	rough struct.	green	
	R-6	-	TPU	TPU	rough struct.	green	TPU	rough struct.	green	
	R-7	-	TPU	TPU	rough struct.	green	TPU	rough struct.	green	
	R-8	-	TPU	TPU	rough struct.	green	TPU	rough struct.	green	
	R-10	-	TPU	TPU	rough struct.	green	TPU	rough struct.	green	
	R-12	-	TPU	TPU	rough struct.	green	TPU	rough struct.	green	
	R-15	-	TPU	TPU	rough struct.	green	TPU	rough struct.	green	

	Class of chemical resistance	Joining	Thickness [in.]	Mass of belt per square foot (belt weight) m _b [lbs./sq.ft.]	Pulley diameter, minimum [in.]	Tensile force for 1% elongation per unit of width k ₁ % [lbs./in.]	Admissible tensile force per width k _{adm} [lbs./in.]	Minimum Temperature [°F]	Maximum Temperature [°F]	Maximum Intermittent [°F]	Coefficient of friction μ of back side on steel	Manufacturing width [in.]	Belt type
2	T	0.11	0.55	2.4	42.8	111.3	-4	212	302	0.8	47	A-2	
2	T	0.13	0.72	4.3	71.4	182.7	-4	212	302	0.8	47	A-3	
2	T	0.20	1.09	9.4	129.0	302.6	-4	212	302	0.8	47	A-4	
2	T	0.27	1.47	13.4	187.6	513.9	-4	212	302	0.8	47	A-5	
1	T	0.17	0.82	4.7	45.6	125.6	-4	176	212	0.3	17.7	A-3LL	
1	T	0.13	0.61	4.3	45.6	125.6	-4	176	212	0.3	17.7	A-3LT	
1	T	0.25	1.25	9.5	103.0	223.0	-4	176	212	0.3	17.7	A-4LL	
1	T	0.19	0.94	9.5	103.0	222.0	-4	176	212	0.3	17.7	A-4LT	
2	T	0.07	0.37	2.4	42.8	111.3	-4	212	302	0.7	47	F-2	
2	T	0.06	0.29	1.0	22.3	57.1	-4	212	302	0.6	94	S-10/15 (S-1)	
2	T	0.08	0.45	2.4	42.8	102.8	-4	212	302	0.6	94	S-18/20 (S-2)	
2	T	0.12	0.70	2.4	43.4	102.8	-4	212	302	0.6	94	S-18/30 (S-3)	
2	T	0.16	0.82	4.3	71.4	188.4	-4	212	302	0.6	94	S-33/40 (S-4)	
2	T	0.20	1.19	4.3	71.9	188.4	-4	212	302	0.6	94	S-33/50 (S-5)	
2	F	0.08	0.45	1.0	57.0	114.0	-4	158	176	0.6	43	TC-20EF	
2	F	0.09	0.60	2.0	96.0	199.9	-4	158	176	0.6	43	TC-35ER	
2	F	0.12	0.60	2.8	148.0	314.0	-4	158	176	0.6	43	TC-55ER	
2	F	0.08	0.45	2.4	131.0	286.0	-4	158	176	0.6	43	TCF-50H	
2	F	0.07	0.37	1.0	57.1	57.1	-4	149	176	0.7	47	TF-10	
2	F	0.08	0.43	1.3	85.6	85.6	-4	149	176	0.7	47	TF-15	
2	F	0.06	0.33	1.3	86.0	86.0	-4	149	176	0.5	47	TF-15H	
2	F	0.09	0.53	2.5	125.6	125.6	-4	149	176	0.7	47	TF-22	
2	F	0.12	0.66	3.5	188.4	188.4	-4	149	176	0.7	43	TF-33	
2	F	0.15	0.86	5.5	285.5	285.5	-4	149	176	0.7	43	TF-50	
2	F	0.17	0.94	8.0	430.0	430.0	-4	149	176	0.7	43	TF-75TE (XVR-1912)	
K8%													
6	Q	0.12	0.10	1.2	2.9	1.9	-4	122	176	0.3	-	HC-3	
6	Q	0.16	0.18	1.6	4.9	3.4	-4	122	176	0.3	-	HC-4	
6	Q	0.20	0.27	2.0	7.9	5.4	-4	122	176	0.3	-	HC-5	
6	Q	0.24	0.38	2.4	11.2	7.6	-4	122	176	0.3	-	HC-6	
6	Q	0.28	0.52	2.8	15.7	10.3	-4	122	176	0.3	-	HC-7	
6	Q	0.32	0.65	3.2	20.2	13.5	-4	122	176	0.3	-	HC-8	
6	Q	0.40	1.04	4.0	31.5	21.1	-4	122	176	0.3	-	HC-10	
6	Q	0.47	1.48	4.8	45.0	30.6	-4	122	176	0.3	-	HC-12	
6	Q	0.59	2.26	6.0	70.8	47.7	-4	122	176	0.3	-	HC-15	
6	Q	0.08	0.05	0.8	1.4	0.9	-4	122	176	0.3	-	R-2	
6	Q	0.12	0.10	1.2	2.9	1.9	-4	122	176	0.3	-	R-3	
6	Q	0.16	0.18	1.6	4.9	3.4	-4	122	176	0.3	-	R-4	
6	Q	0.20	0.27	2.0	7.9	5.4	-4	122	176	0.3	-	R-5	
6	Q	0.24	0.38	2.4	11.2	7.6	-4	122	176	0.3	-	R-6	
6	Q	0.28	0.52	2.8	15.7	10.3	-4	122	176	0.3	-	R-7	
6	Q	0.32	0.65	3.2	20.2	13.5	-4	122	176	0.3	-	R-8	
6	Q	0.40	1.04	4.0	31.5	21.1	-4	122	176	0.3	-	R-10	
6	Q	0.47	1.48	4.8	45.0	30.6	-4	122	176	0.3	-	R-12	
6	Q	0.59	2.26	6.0	70.8	47.7	-4	122	176	0.3	-	R-15	

Explanations

- = applicable
- = conditionally applicable
- = not applicable

drk. grn = dark green

drk grey = dark grey

H = hamid

NBR = acrylo-nitrile-butadiene rubber

PA = polyamide

PES = polyester

PES/CO = polyester/cotton

PUR = polyurethane, cross-linked

TPU = polyurethane, thermo-plastic

Joining

T = Thermofix
F = Flexproof
Q = Quickmelt

All data are approximate values under standard climatic conditions: 23°C/73°F and 50% relative humidity.

GLASS

Product group	Belt/tape type	PLY	For slider bed	For carrying roller	Tension member, material	Conveying side, material	Conveying side, surface	Conveying side, color	Back side, material	Back side, surface
High Temp	HIT/FG/3	3	■	■	glass	PTFE glass	fabric	beige	PTFE glass	fabric
	HIT/APA/4	4	■	■	aramide	aramide/PAN	fabric	yellow	aramide	fabric
	HIT/AW/4	4	■	■	aramide	aramide	fabric	yellow	aramide/wire	fabric
	Heat Mate 300A	-	■	■	aramide	aramide	buffed	yellow	aramide	buffed
	Heat Mate 300AT	-	■	■	aramide	coated aramide	buffed	yellow	coated aramide	buffed
	Heat Mate 380A	2	■	■	aramide	aramide	buffed	yellow	PES	impreg.
	Heat Mate 500	-	■	■	aramide	aramide	buffed	yellow	aramide	buffed

ALUMINUM

High Temp	HIT/APA/4	4	■	■	aramide	aramide/PAN	fabric	yellow	aramide	fabric
	HIT/AW/4	4	■	■	aramide	aramide	fabric	yellow	aramide/wire	fabric
	Heat Mate 300A	-	■	■	aramide	aramide	buffed	yellow	aramide	buffed
	Heat Mate 380A	2	■	■	aramide	aramide	buffed	yellow	PES	impreg.
	Heat Mate 500	-	■	■	aramide	aramide	buffed	yellow	aramide	buffed

AIRSLIDE

Polyester	SWP/4	4	-	-	PES	PES	fabric	white	PES	fabric
	SWP/5	5	-	-	PES	PES	fabric	white	PES	fabric
	SWP/6	6	-	-	PES	PES	fabric	white	PES	fabric
	NW/AGC 2000	-	-	-	PES	PES	smooth	white	PES	smooth
High Temp	HIT/FG/3	3	-	-	aramide	aramide	fabric	caramel	PTFE glass	fabric
	HIT/APA/4	4	-	-	aramide	aramide	fabric	yellow	aramide	fabric
	Heat Mate 500A	-	-	-	aramide	aramide	buffed	yellow	aramide	buffed
	Heat Mate 300A	-	-	-	aramide	aramide	buffed	yellow	aramide	buffed

Class of chemical resistance	Joining	Thickness [in.]	Mass of belt per square foot (belt weight) m _b [lbs./sq.ft.]	Pulley diameter, minimum [in.]	Tensile force for 1% elongation per unit of width k1 [lbs./in.]	Admissible tensile force per width k adm [lbs./in.]	Minimum Temperature [°F]	Maximum Continuous [°F]	Maximum Intermittent [°F]	Coefficient of friction μ of back side on steel	Manufacturing width [in.]	Clipper	Belt type
------------------------------	---------	-----------------	---	--------------------------------	---	---	--------------------------	-------------------------	---------------------------	---	---------------------------	---------	-----------

TEMP RANGE												
#	L	0.27	1.40	6	-	200	800 - 1200	0.20	*	5SS	HIT/FG/3	
#	L,S	0.19	0.50	3	-	125	800 - 1100	0.20	*	3SS	HIT/APA/	
#	L,S	0.19	0.45	3	-	125	800 - 1100	0.20	*	3SS	HIT/AW/4	
#	L,S	0.33	0.65	3	-	250	800 - 1100	0.20	60	5SS	Heat Mate 300A	
#	L	0.31	0.65	3	-	250	800 - 1100	0.20	60	5SS	Heat Mate 300AT	
#	L,S,F	0.31	0.65	3	-	250	800 - 1100	0.15	56	5SS	Heat Mate 380A	
#	L,S	0.50	0.56	3	-	-	800 - 1100	0.20	60	-	Heat Mate 500A	
#	L,S	0.19	0.50	3	-	125	800 - 1100	0.20	*	3SS	HIT/APA/4	
#	L,S	0.19	0.45	3	-	125	800 - 1100	0.20	*	3SS	HIT/AW/4	
#	L,S	0.33	0.65	3	-	250	800 - 1100	0.20	60	5SS	Heat Mate 300A	
#	L,S,F	0.31	0.65	3	-	250	800 - 1100	0.15	56	5SS	Heat Mate 380A	
#	L,S	0.50	0.56	3	-	-	800 - 1100	0.20	60	-	Heat Mate 500	

#	L,S	0.195	0.58	-	-	-60	310	350	-	72	SWP/4	
#	L,S	0.225	0.72	-	-	-60	310	350	-	72	SWP/5	
#	L,S	0.250	0.085	-	-	-60	310	350	-	50	SWP/6	
#	L,S	0.215	0.78	-	-	-60	310	350	-	72	NW/AGC 2000	

#	L,S	0.28	1.68	-	200	30	600	750	-	*	HIT/FG/3	
#	L,S	0.19	0.61	-	125	-75	475	575	-	*	HIT/APA/4	
#	L,S	0.50	0.56	-	-	-75	475	575	-	60	Heat Mate 500A	
#	L,S	0.33	0.65	-	250	-75	475	575	-	60	Heat Mate 300A	

BELT/TAPE TYPE	FILL TENSILE STRENGTH (lb/in)	WARP TENSILE STRENGTH (lb/in)	AIR PERMEABILITY Inches of water Δ P (ft ³ /ft ² /min.)		
			0.5	8.0	20
SWP/4	1800	2200	3.5	13.5	31.0
SWP/5	2500	2200	<1.8	5.0	14.0
SWP/6	2500	3000	<1.8	4.5	10.0
NW/AGC 2000	1500	1500	<1.8	5.5	13.0
HIT/FG/3	900	3000	2.5	16.0	33.0
HIT/A/3	1200	2500	2.3	25.5	>40
HIT/APA/4	1800	3000	2.5	12.5	28.5

Explanations

- = applicable
- ◆ = pending
- = conditionally applicable
- = not applicable

CBS = cover both sides

COS = cover one side

FBS = friction both sides

NBR = acrylo-nitrile-butadiene rubber

NW = non-woven

PES = polyester

PTFE = fiberglass

PUR = polyurethane, cross-linked

PVC = polyvinylchloride

PVC adh. = polyvinylchloride adhesive

PVC s-adh. = polyvinylchloride super adhesive

RMP = rubber modified product

SBR = styrene butadiene rubber

TPE = thermoplastic elastomer

TPU = polyurethane, thermo-plastic

Class of chemical resistance

= Reference NIBA Chemical Resistance Guide

Joining

T = Thermofix

F = Flexproof

L = Laced

S = Stitched

Temperature range indicates permissible contact temperature of conveyed material.

* Consult Customer Care.

All data are approximate values under standard climatic conditions: 23°C/73°F and 50% relative humidity.

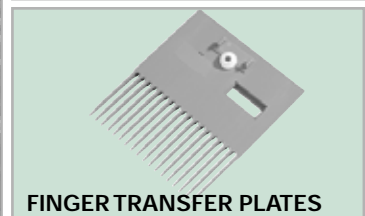
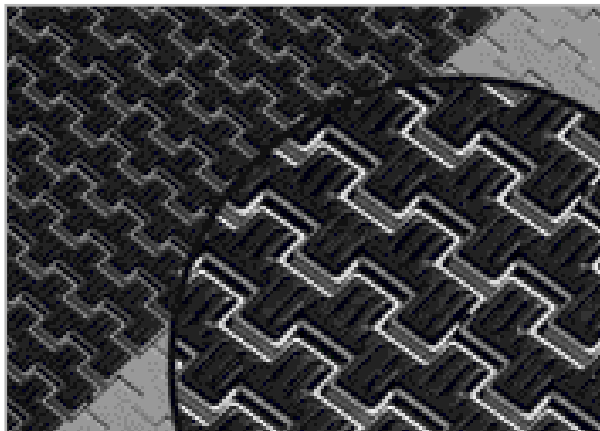
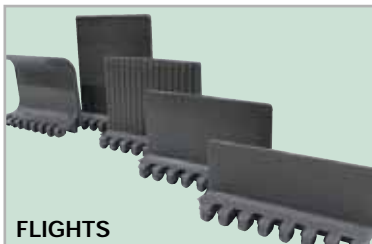
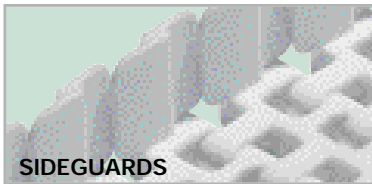
HabasiLINK® PLASTIC MODULAR BELTS

Belt Specifications

*Please refer to the Engineering Guidelines for curved belt strength.

W=white, G=gray, B=blue, N=natural, BK=black, R=red, T=tan, H=HabaGUARD®

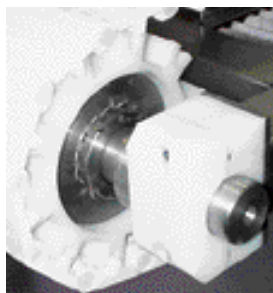
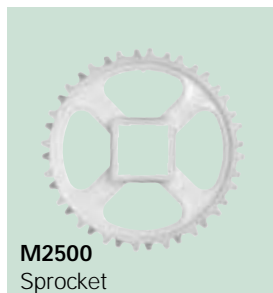
Belt Code	Pitch		Standard Color and Material				Open Area		Belt Thickness (USDA design)		Belt Strength		
	inch	Belt Style	PP	PE	POM	[%]	inch	inch	inch	PP	PE	POM	
M1220	0.5	Flat Top	G,W	N,H	W,B,H	0	0.39	yes	0.20	754	411	1,096	
M1220	0.5	Grip Top	G,W			0	0.49	yes	0.20	754	N/A	1,096	
M1233	0.5	Flush Grid	G,W	N,H	W,B,H,D,G	25	0.39	yes	0.20	750	480	1,096	
M2500	1	Grip Top	G,W		B		0.55	no	0.20	1233	N/A	1781	
M2510	1	Flat Top	W	N,H	W,H	0	0.43	yes	0.20	959	548	1096	
M2511	1	Perforated Flat Top	W	N	W	16	0.43	yes	0.20	753	479	1027	
M2520	1	Flat Top	G,W,B	N	G,W,B	0	0.39	no	0.20	1233	616	1473	
M2520	1	Roller Top	G,W,B	N	G,W,B	0	0.55	no	0.20	1,233	616	1,473	
M2531	1	Raised Rib	G,T		B	35	0.63	yes	0.20	1,096	N/A	1,300	
M2533	1	Flush Grid	G,W,T,N	N,H	W,B,H	35	0.39	yes	0.20	959	548	1,233	
M2540	1	Radius Flush Grid	G,T,N		W,H	35	0.43	yes	0.20	1,300*	N/A	1,850*	
M2540	1	Radius Flush Grid Grip Top	G,W		W,H	35	0.62	yes	0.20	1,300*	N/A	1,850*	
M2540	1	Radius Roller Top	G,W		W,H	35	0.59	yes	0.20	1,300*	N/A	1,370*	
M2543	1	Radius Flush Grid Tight Turn	W		W,B	35	0.50	yes	0.20	959	N/A	1,370	
M2620	1	Flat Top Heavy Duty	G		D,G	0	0.50	no	0.22	1815	N/A	3,083	
M2620	1	Grip Top	G		DG	0	0.60	no	0.22	1815	N/A	3,083	
M3840	1.5	Radius Flush Grid	G,W		W,H,B	31	0.70	yes	0.23	1,712*	N/A	2,192*	
M3840	1.5	Radius Roller Top	G,W		W,H,B	31	0.95	yes	0.23	1,712*	N/A	2,192*	
M3843	1.5	Radius Flush Grid Tight Turn	W		W	0	0.70	yes	0.23	1,370	N/A	1,986	
M5010	2	Flat Top	G,W	N,BK,R,T,H	R,B,W,H	0	0.63	yes	0.27	1,233	685	1,233	
M5010	2	Roller Top	G,W	N,BK,R,T,H	R,B,W,H	0	0.91	yes	0.27	1,233	685	1,233	
M5010	2	Grip Top	G,W			0	0.75	yes	0.27	1,233	N/A	1,233	
M5011	2	Perforated Flat Top	W	N	W	15	0.63	yes	0.27	1,233	685	1,233	
M5013	2	Cone Top	W	N	W	0	0.75	yes	0.27	1,233	N/A	1,233	
M5014	2	Nub Top	W	N		0	0.74	yes	0.27	1,233	685	N/A	
M5020	2	Flat Top	G		DG	0	0.63	no	0.27	2398	N/A	3,083	
M5020	2	Grip Top	G,W			0	0.70	no	0.27	2398	N/A	3,083	
M5021	2	Perforated Flat Top	W	N		25	0.63	no	0.27	2056	1,370	N/A	
M5023	2	Non Skid			Y,BK	0	0.68	no	0.27	2398	N/A	3,038	
M5031	2	Raised Rib	G			34	0.95	no	0.27	2,055	N/A	N/A	
M5032	2	0°, 45°, 90°	G,W			34	1.26	no	0.27	1,712	1,644	N/A	
M5032	2	Flush Grid Heavy Duty	G,W			34	0.63	no	0.27	1,781	1,233	N/A	
M5033	2	Flush Grid	G,W	N		37	0.63	yes	0.27	1,781	1,233	N/A	
M5131	2	Raised Rib	G			36	0.95	no	0.27	2,192	N/A	N/A	



Sprocket Specifications

* Also available in split sprocket. **Items in green available with HabaGUARD®**

No. of Teeth	M5000 2" Pitch			M3800 1.5" Pitch			M2600			M2500 1" Pitch			M1220 .5" Pitch		
	PD Inch [mm]	Bore Sizes Sq Rd		PD Inch [mm]	Bore Sizes Sq Rd		PD Inch [mm]	Bore Sizes Sq Rd		PD Inch [mm]	Bore Sizes Sq Rd		PD Inch [mm]	Bore Sizes Sq Rd	
6	4.0*	1.5 [40]													
7										2.3	1 [25]	1 [25]			
8	5.3*	1.5 [40]		4.0	1.5 [40]					2.6	1 [25]	1, 1.1875 [25, 30]			
10	6.5*	1.5, 2.5 [40, 60]								3.3	1, 1.5 [25, 40]	1, 1.1875 [25, 30]	1.6		0.75 [20]
12	7.8*	1.5, 2.5 [40, 60]		5.9	1.5, 2.5 [40, 60]		3.9	1.5	1, 1.1875 1.25, 1.5	3.9*	1, 1.5 [25, 40]	1, 1.1875 [25, 30]			
15													2.5	1 [25]	1 [25]
16	10.3*	1.5, 2.5, 3.5 [40, 60, 90]		7.8	1.5 [40]		5.1	1.5	1, 1.1875 1.25, 1.5	5.1	1.5 [40]				
18							5.8*	1.5 [40]	1, 1.1875 1.25, 1.5	5.8 *	1.5, 2.5 [40, 60]	1, 1.1875 [25, 30]			
20										6.4 *	1.5, 2.5 [40, 60]	1, 1.1875 [25, 30]			
21							6.7	1.5 [40]	1, 1.1875 1.25, 1.5						
24													3.9*	1, 1.5 [25, 40]	1 [25]
28													4.6*	1, 1.5 [25, 40]	1 [25]
36													5.9	1.5, 2.5 [40, 60]	1 [25]



These HabasitLINK® modules and accessories are in stock as of February 2005. New styles are being added frequently. Please contact Customer Care for pricing and to get an update on available styles.

Call Customer Care (800) 458-6431 to get more information on ModulCLEAN, Clean-in-Place system.

Material Dimension Chart

Product Range or Type	Stocked Width	Mfg / Stocked Length	Length Range
Most power transmission belts, machine tapes, spindle tapes and folder gluer belts	47 inch (1.2 mtr)	328 ft, 394 ft	300-400 ft
3-digit S series, TF series, TC series	47 inch (1.2 mtr)	787 ft	750-820 ft
Domestic Conveyor belts (i.e. Trackmate, Polymate, Ulti-Mate, Heatmate, Allveyor)	72 inch (1.8 mtr)	600 ft	540-660 ft
European Conveyor belts (i.e. Standard, Food, High Duty, Extra-Line, Cleanline, HG).	Some at 94 inch (2.4 mtr) and others at 79 inch (2 mtr) - other widths possible / available. Many types are manufactured to 157 inches (4 mtr)	328 ft	300-360 ft
N-Line, P-Line Conveyor Belts	118 inches for most types (3 mtr)	328 ft	300-360 ft

Note: For CL (Coil) and SL (Slab) orders, we reserve the right to ship and invoice +/- 10% of the length stated.

Habasit Belting, Inc.
 Customer Care: (800) 458-6431
 Toll-free Fax: (800) 422-2748
www.habasitusa.com

